

Pacific Iron Ore Corporation 2008 Core Drilling Program The Pearson Project

PACIFIC
IRON ORE
CORPORATION



Disclaimer:

The data in this report should be considered preliminary and is subject to change after further analysis. Drill hole locations were recorded using handheld GPS and should only be considered accurate to +/-10m. Sampling intervals were recorded using metric measuring tapes and should only be considered accurate to 0.01m. Intervals reported consist of assays greater or equal to 30 percent total Fe.

Qualified Person

The drilling program and aerial magnetic survey are being undertaken pursuant to the recommendations contained in the independent qualifying report dated October 31, 2007 and revised on February 13 and March 11, 2008 entitled “Technical Report – Pearson Project, British Columbia” (the “Qualifying Report”) prepared by an independent geologist, Mr. George Owsiaci, P. Geo. of Victoria, British Columbia. The Qualifying Report was prepared in contemplation of the requirements of National Instrument 43-101. A copy of the 43-101 Technical Report is available under the Corporations profile on SEDAR and can be accessed at www.sedar.com.

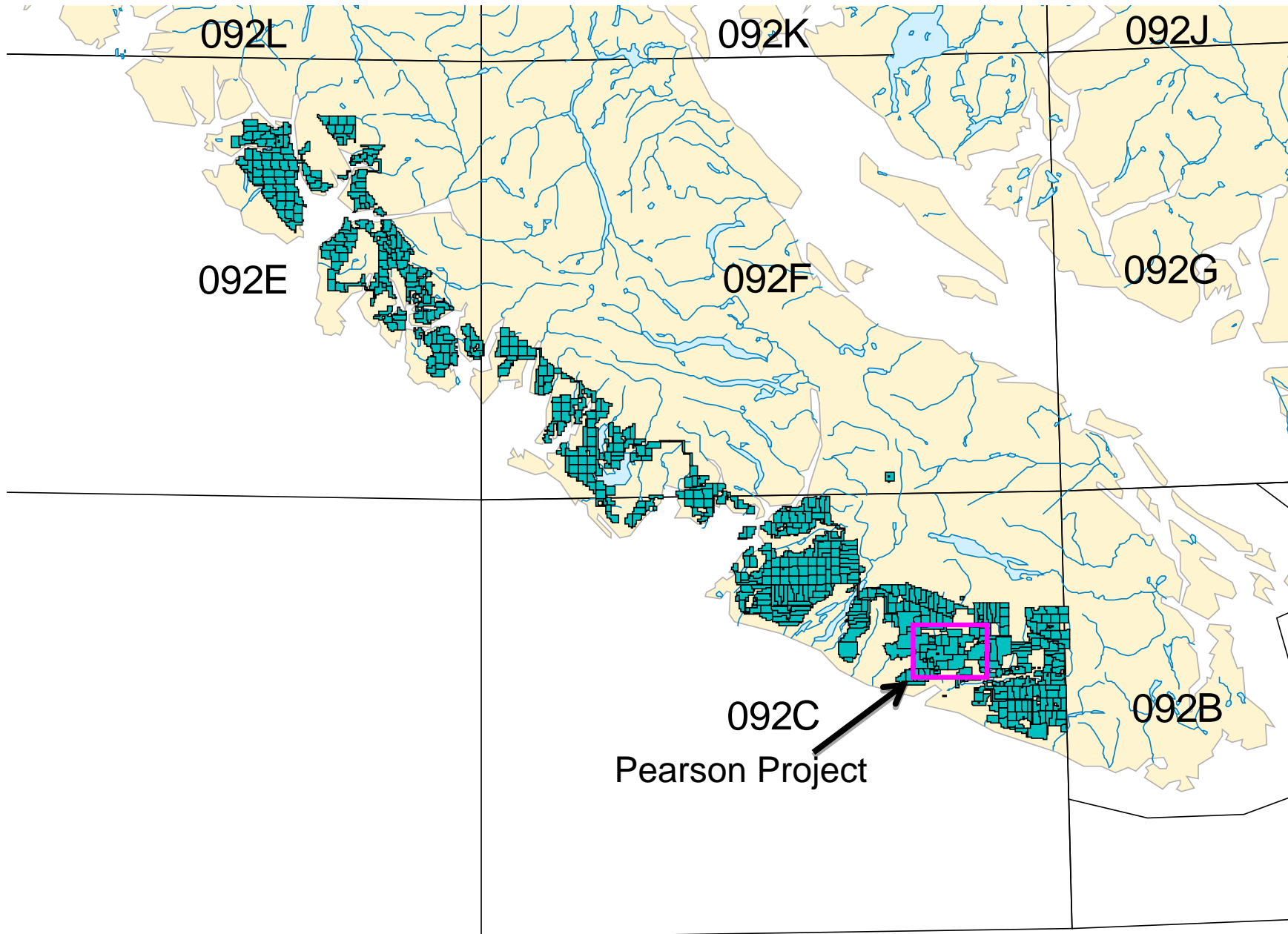
Mr. Garry Payie, P. Geo of Victoria, British Columbia, an independent geological consultant, is the Qualified Person under the guidelines of NI 43-101. Mr. Payie oversees the Corporation’s exploration program with respect to the Pearson Project and has reviewed and approved the technical disclosure contained in this presentation.

Assay Testing

The core samples were provided to ALS Chemex, an ISO 9001 and ISO 17025 accredited facility located in North Vancouver, British Columbia, for analysis and processing. The samples taken from the core of the mineralized zone were analyzed initially using one of the following 2 geochemical procedures: (1) ME-MS41 - Ultra-Trace Level Methods using Inductively Coupled Plasma-Atomic Emission Spectroscopy (ICP-AES) followed by Inductively Coupled Plasma - Mass Spectrometry (ICP-MS); 2) ME-ICP41 - Inductively Coupled Plasma - Atomic Emission Spectroscopy (ICP - AES). Both methods provide Total Fe analysis with detection limits from 0.01% - 50% Fe. Geochemical procedure 1 provides additional analysis for a suite of 50 elements while procedure 2 provides additional analysis for a suite of 34 elements. For detection limits above 50% both methods are followed with assay procedure ME-OG46, a method used for the evaluation of ores and high-grade materials to be optimized for accuracy and precision at high concentration levels. In this method a prepared sample is digested in 75% aqua regia and later analyzed by inductively coupled plasma - atomic emission spectrometry (ICP - AES) or by atomic absorption spectrometry. These geochemical and assay techniques yield Total Fe percentage and are not meant as a final determination of recoverable magnetite.

Pearson Project Summary

- Identified three initial target areas in the Pearson Project
The Bugaboo, The Edinburgh and the Granite
- The 2008 Exploration Program will focus on:
 - 51 Core holes completed from 23 pad locations on the Bugaboo Creek Area
 - 30 holes on 14 pads in the Daniel
 - 18 holes on 8 pads in the Conqueror
 - 3 holes on 1 pad in the David,
 - 8 core holes to be completed from 3 pad locations on the Edinburgh
 - 11 core holes to be completed in the Granite
 - Completion of an airborne geophysical survey covering approximately 13,570 line kilometres
- The following slides show the Corporation's mineral claims on Vancouver Island



092L

092K

092J

092E

092F

092G

092C

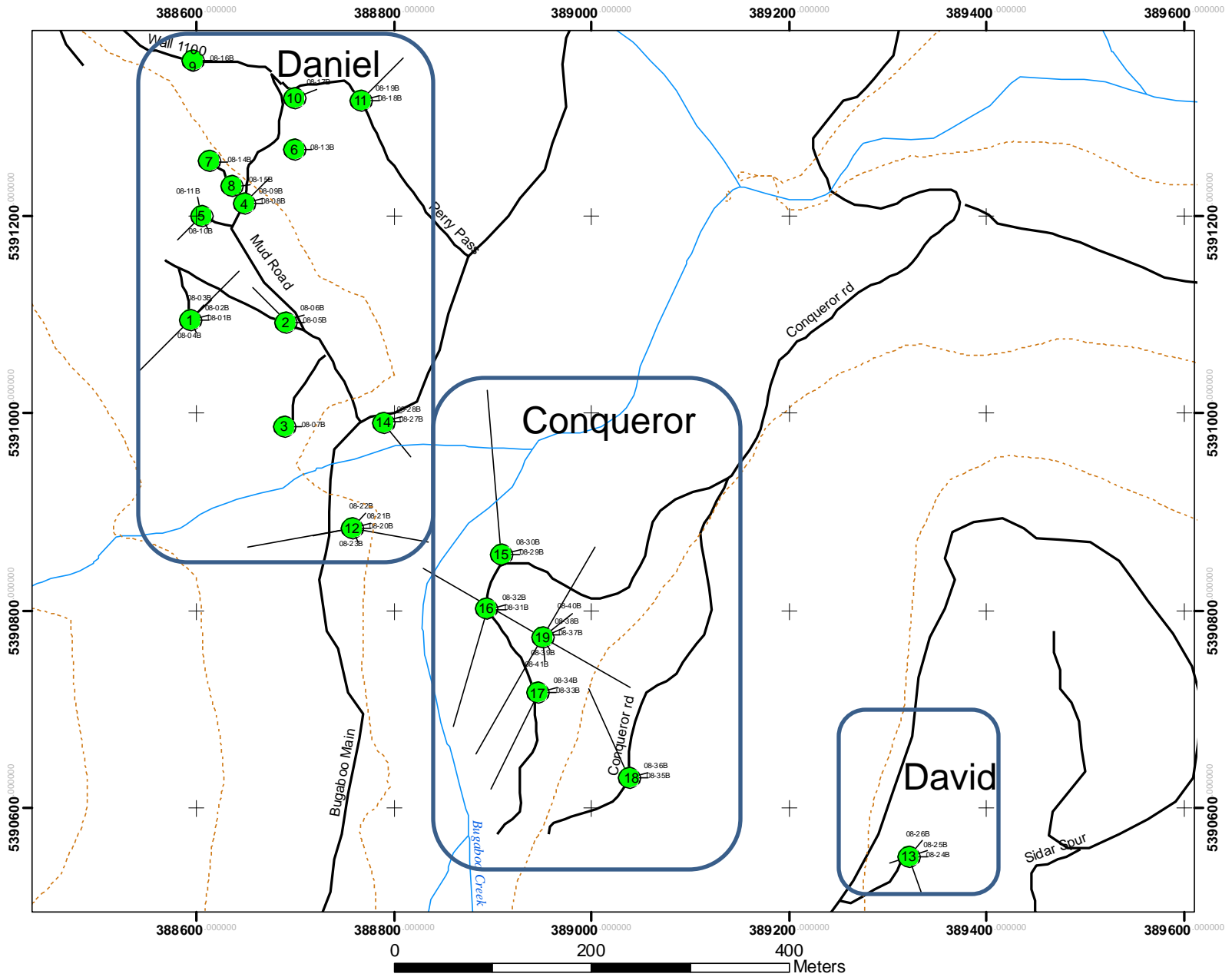
092B

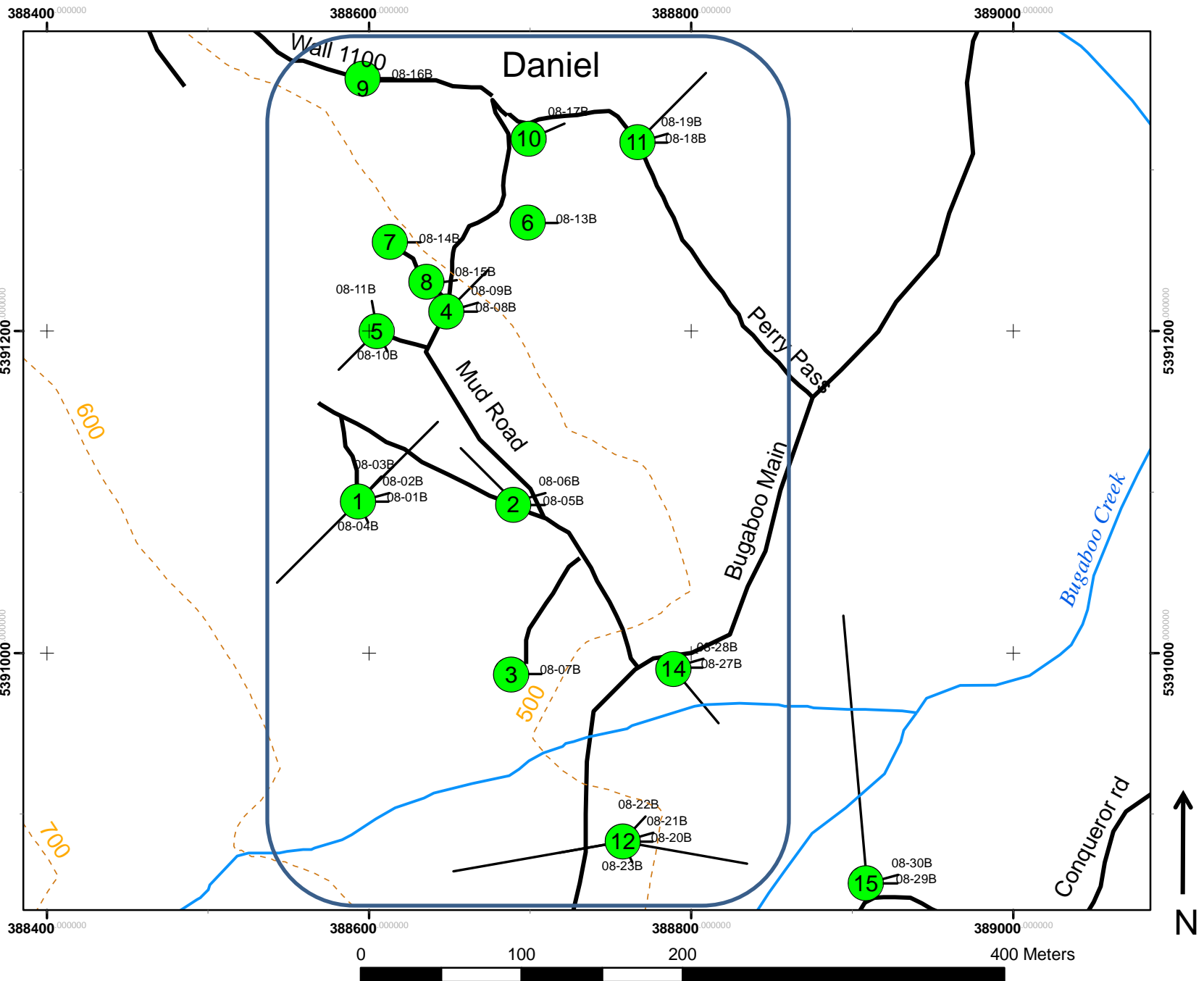
Pearson Project

Pacific Iron Ore Corporation
2008 Core Drilling Program
Bugaboo Creek

Bugaboo Creek

- The Bugaboo Creek Area is comprised of three documented mineral occurrences:
 - The Daniel
 - The Conqueror
 - The David
- Phase one of the exploration program is to include approximately 70 diamond drill holes in the Bugaboo, Edinburgh and Granite.
- The following are results of the first 41 diamond drill holes in this year's (2008) program on Bugaboo Creek and the original 2006 Airborne Survey





388400 000000

388600 000000

388800 000000

389000 000000

5391200 000000

5391000 000000

5391200 000000

5391000 000000

388400 000000

388600 000000

388800 000000

389000 000000

0 100 200 400 Meters



Pad 1

Location: 388593E 5391094N

Elevation: 507 m

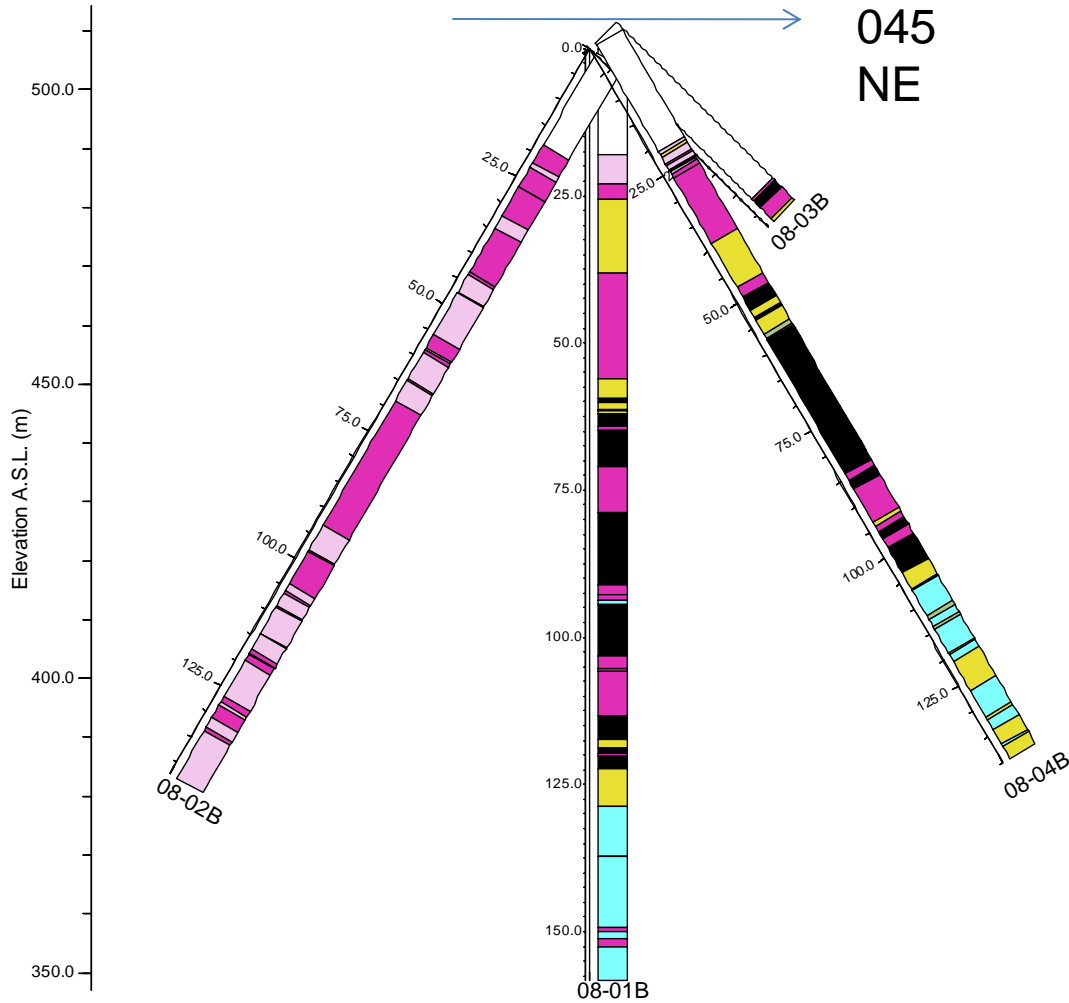
DDH-08-01B dip -90

DDH-08-02B dip -60 Az. 225

DDH-08-03B dip -45 Az. 045

DDH-08-04B dip -60 Az. 045

- Lithology
- Biotite-Gabbro Porphyrite
 - Diorite
 - Gabbro
 - Obliterated-Propylitic
 - Obliteration-Silicic
 - Massive Magnetite
 - Hornblendite
 - Skarn
 - Marble



DDH-08-02B

Location: 388593E 5391094N

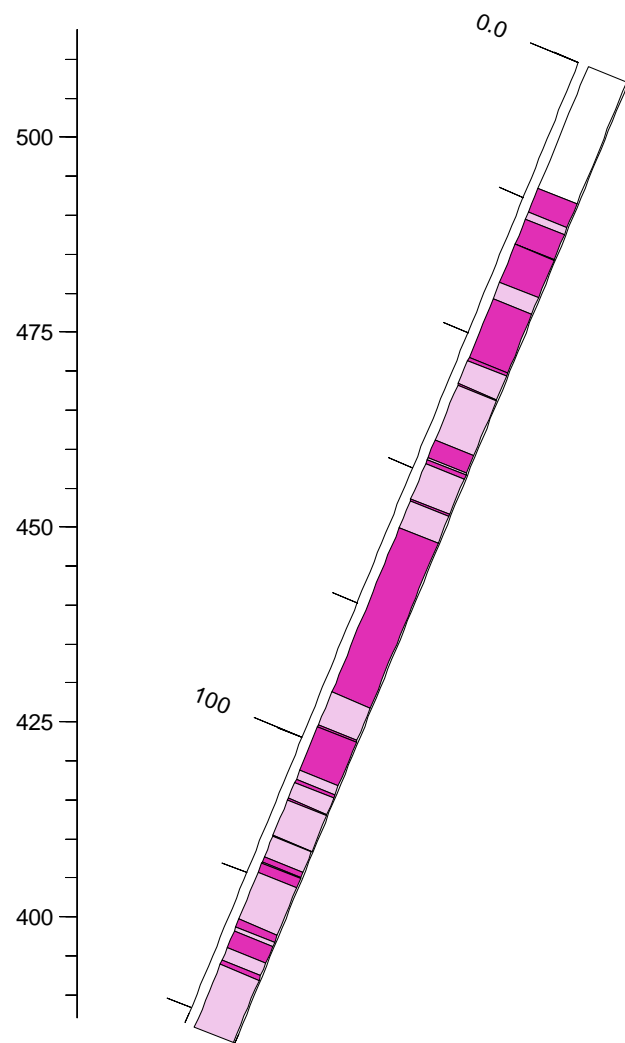
Elevation: 507 m A.M.S.

Collar dip: -60°

Azimuth: 225 °

E.O.H: 142.3 m

No intersections



- Lithology
- Biotite-Gabbro Porphyrite
 - Diorite
 - Gabbro
 - Obliterated-Propylitic
 - Obliteration-Silicic
 - Massive Magnetite
 - Hornblendite
 - Skarn
 - Marble

DDH-08-03B

Location: 388593E 5391094N

Elevation: 507 m

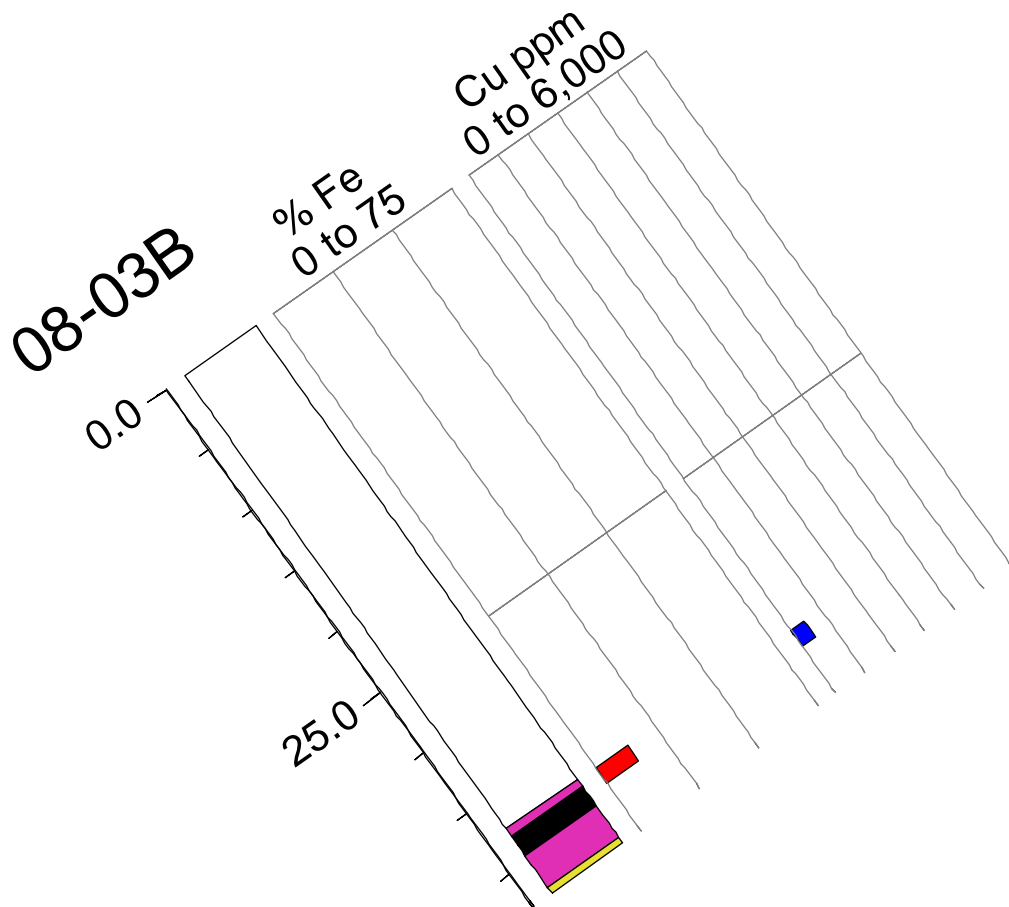
Collar dip: -45°

Azimuth: 045 °

E.O.H: 42.7 m

Failed hole

- Lithology
- Biotite-Gabbro Porphyrite
 - Diorite
 - Gabbro
 - Obliterated-Propylitic
 - Obliteration-Silicic
 - Massive Magnetite
 - Hornblendite
 - Skarn
 - Marble



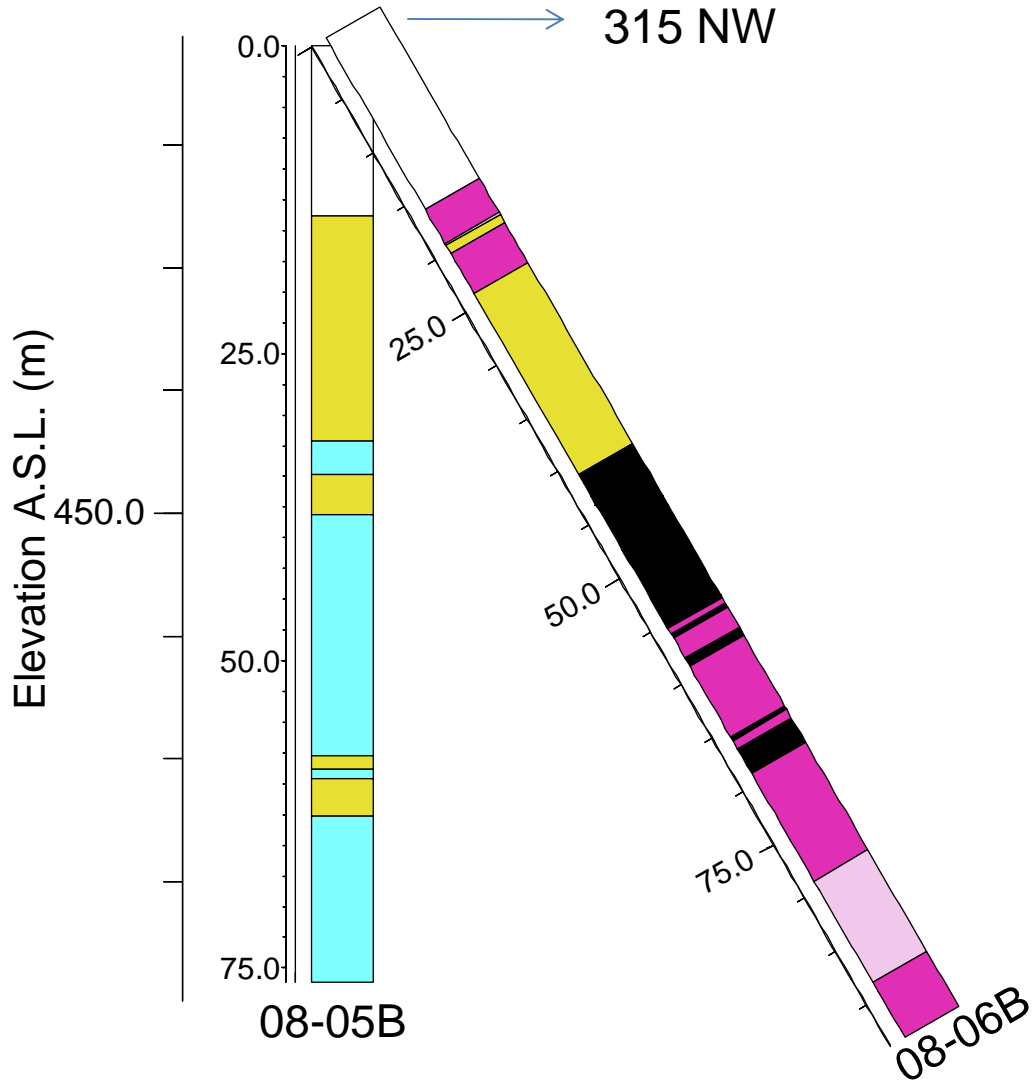
Pad 2

Location: 388690E 5391092N

Elevation: 488 m

DDH-08-05B dip -90°

DDH-08-06B dip -60° Az. 315°



- Lithology
- Biotite-Gabbro Porphyrite
 - Diorite
 - Gabbro
 - Obliterated-Propylitic
 - Obliteration-Silicic
 - Massive Magnetite
 - Hornblendite
 - Skarn
 - Marble

DDH-08-05B

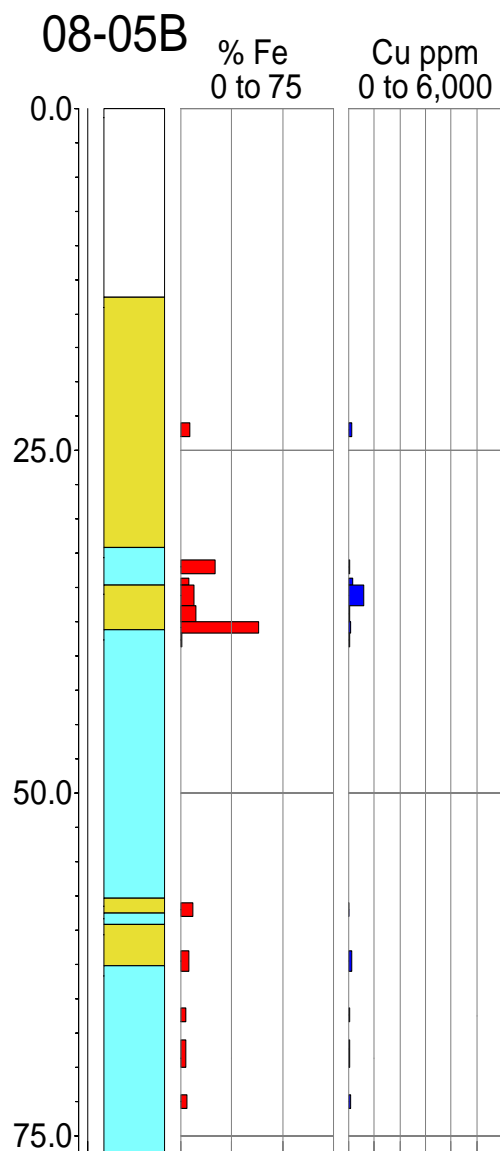
Location: 388690E 5391092N

Elevation: 488 m

dip -90°

Azimuth n/a

E.O.H.



Lithology

- Biotite-Gabbro Porphyrite
- Diorite
- Gabbro
- Obliterated-Propylitic
- Obliteration-Silicic
- Massive Magnetite
- Hornblendite
- Skarn
- Marble

Intersections

From	To	Total Length	Average Fe %	Average S%	Average Cu ppm
37.50	38.30	0.80	38.20	0.45	68.00

DDH-08-06B

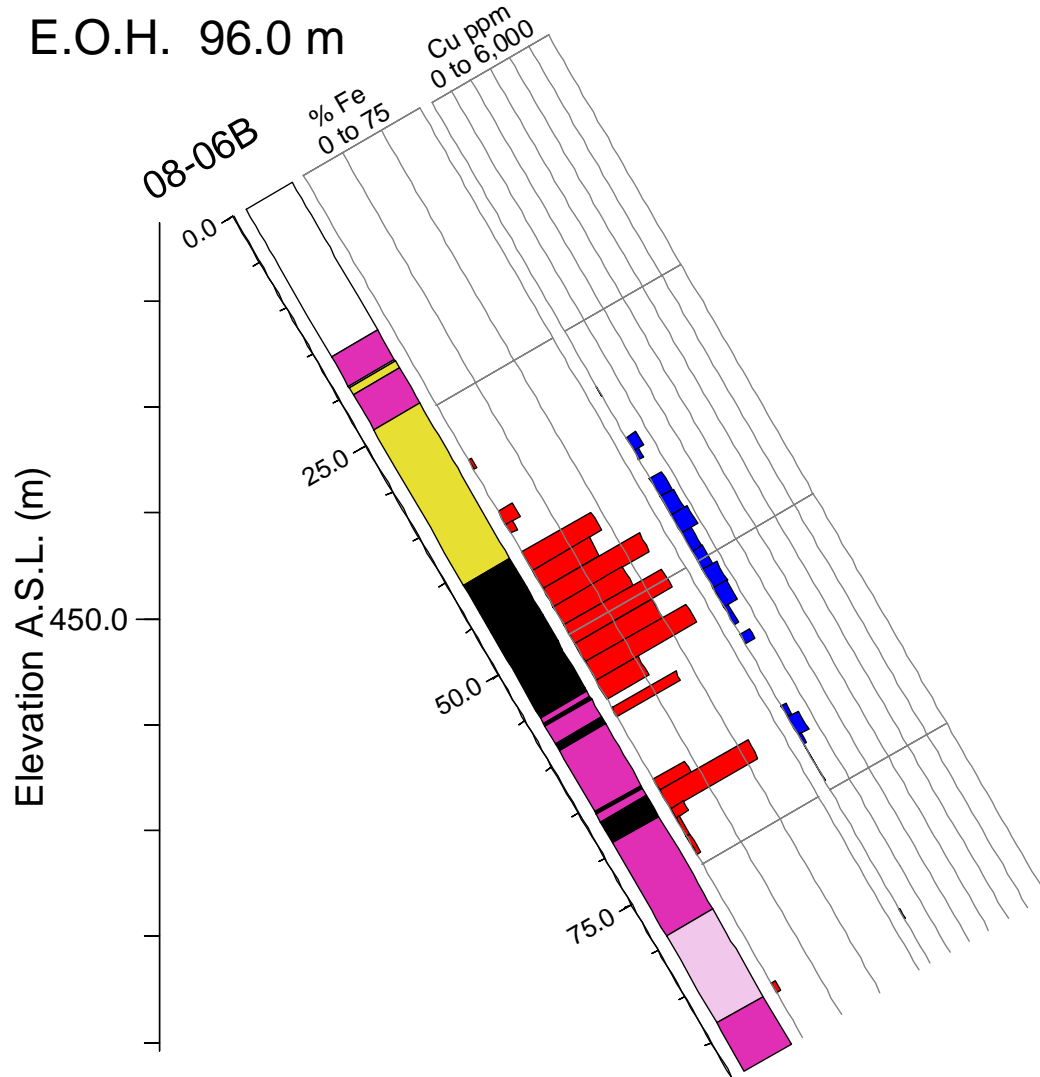
Location: 388690E 5391092N

Elevation: 488 m

dip -60°

Azimuth 315°

E.O.H. 96.0 m



- Lithology
- Biotite-Gabbro Porphyrite
 - Diorite
 - Gabbro
 - Obliterated-Propylitic
 - Obliteration-Silicic
 - Massive Magnetite
 - Hornblendite
 - Skarn
 - Marble

Intersections					
From (m)	To (m)	Total Length (m)	Average Fe %	Average S%	Average Cu ppm
41.00	55.00	14.00	52.21	3.53	652.29
58.00	59.00	1.00	41.10	3.12	503.00
67.00	69.00	2.00	56.70	3.14	534.00

Cumulative Thickness	17.00 m	@	52.09% Fe
		@	3.46% S
		@	629.59 ppm Cu

Pad 3

Location: 388688E 5390987N

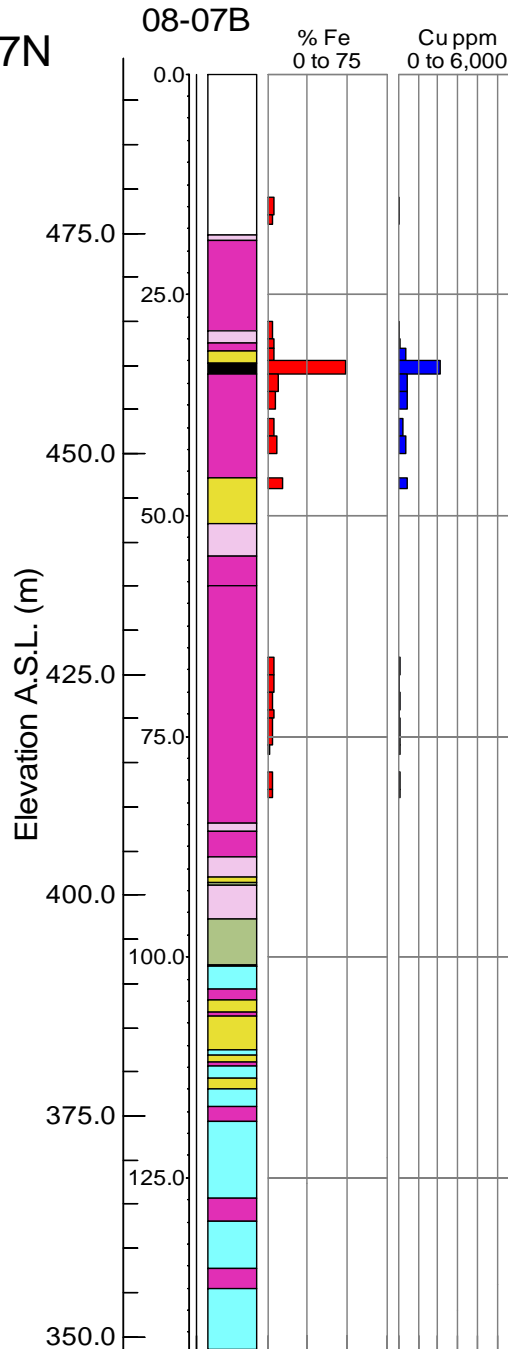
Elevation: 493 m

DDH-08-07B

dip -90°

Azimuth n/a

E.O.H. 144.4 m



- Lithology
- Biotite-Gabbro Porphyrite
 - Diorite
 - Gabbro
 - Obliterated-Propylitic
 - Obliteration-Silicic
 - Massive Magnetite
 - Hornblendite
 - Skarn
 - Marble

Intersections

From (m)	To (m)	Total Length (m)	Average Fe %	Average S %	Average Cu ppm
32.50	34.00	1.50	49.20	6.76	2110.00

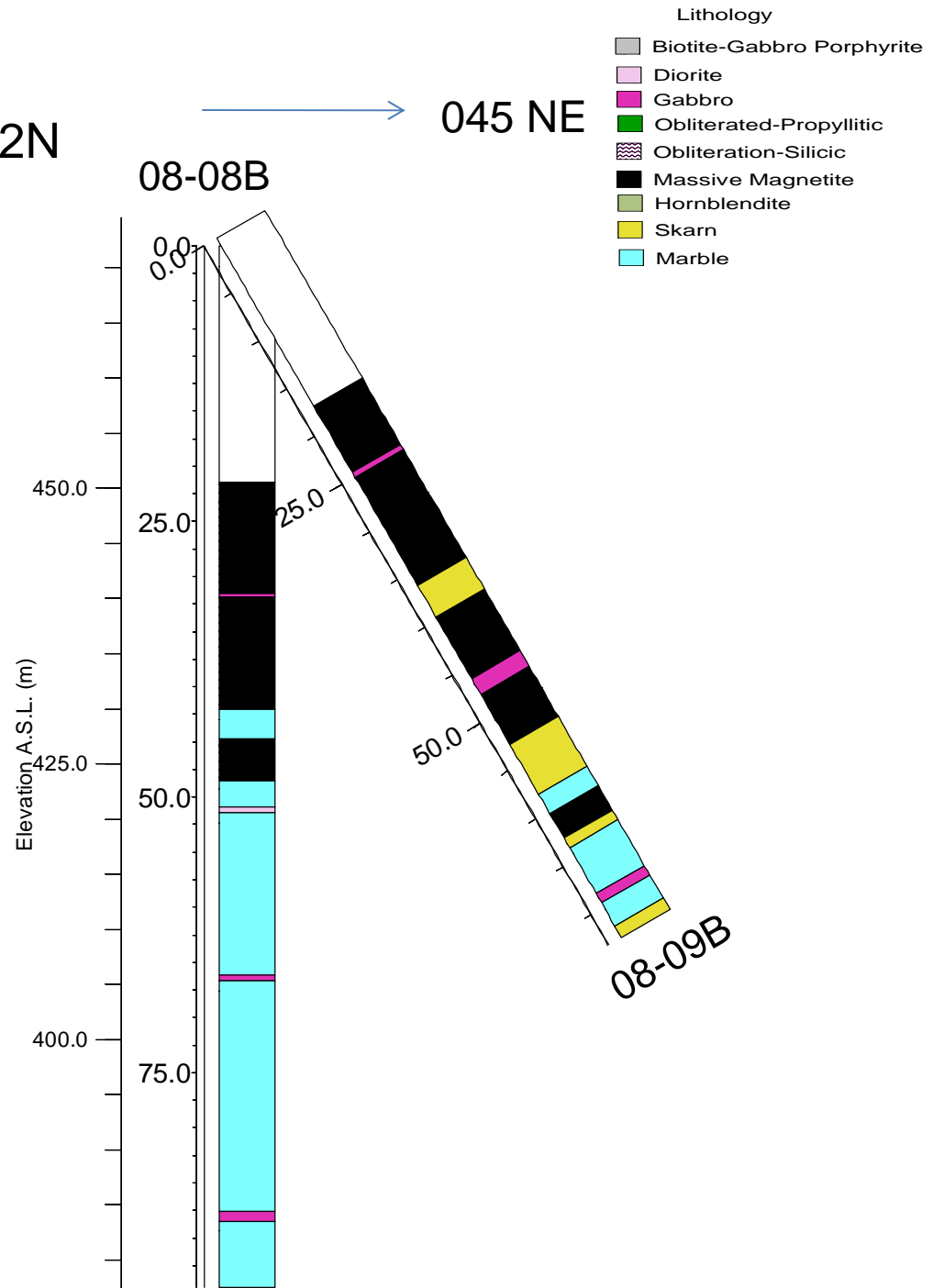
Pad 4

Location: 388648E 5391212N

Elevation: 472 m

DDH-08-08B dip -90°

DDH-08-09B dip -60° Azimuth 045°



DDH-08-08B

Location: 388648E 5391212N

Elevation: 472 m

dip -90°

Azimuth n/a

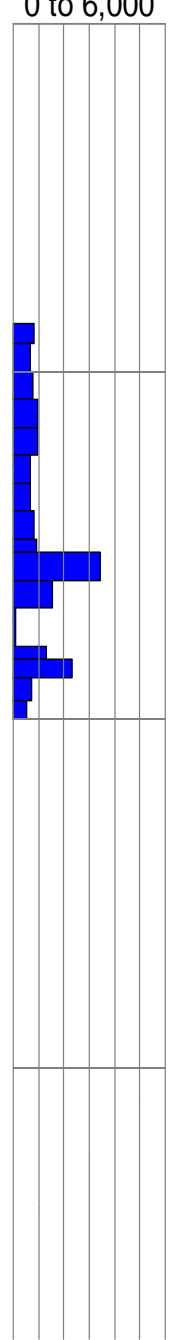
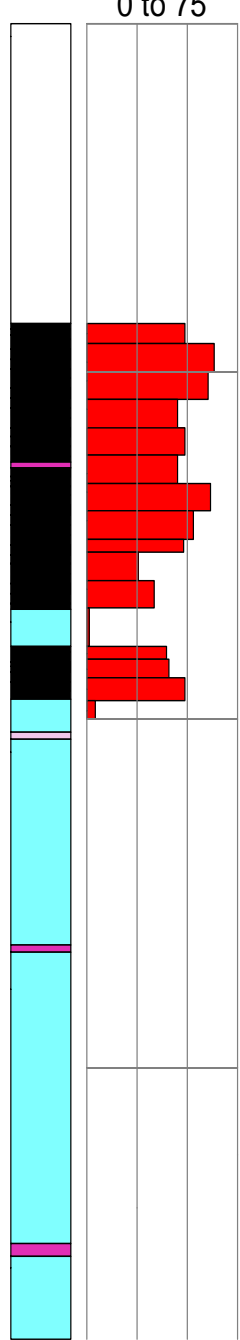
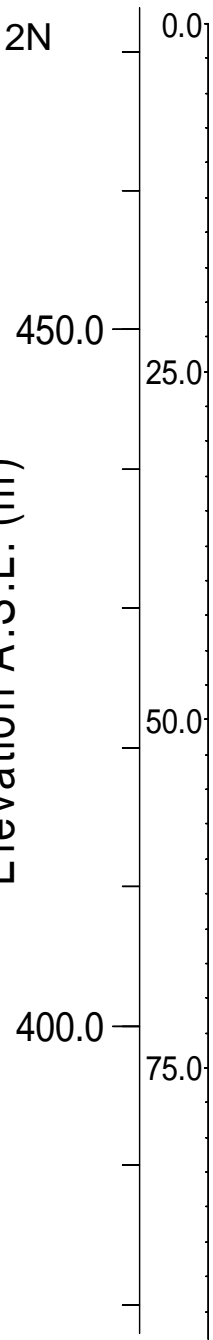
E.O.H. 94.5 m

08-08B

% Fe
0 to 75

Cu ppm
0 to 6,000

Elevation A.S.L. (m)



- Lithology**
- Biotite-Gabbro Porphyryite
 - Diorite
 - Gabbro
 - Obliterated-Propylitic
 - Obliteration-Silicic
 - Massive Magnetite
 - Hornblendite
 - Skarn
 - Marble

Intersections

From (m)	To (m)	Total Length (m)	Average Fe %	Average S %	Average Cu ppm
21.50	38.00	16.50	53.12	3.13	791.00
40.00	42.00	2.00	33.40	8.11	1535.00
44.70	48.60	3.90	43.89	5.88	1393.90

Cumulative Thickness 22.40 m @ 49.75 % Fe @ 4.05 % S @ 962.40 ppm Cu

DDH-08-09B

Location: 388690E 5391092N

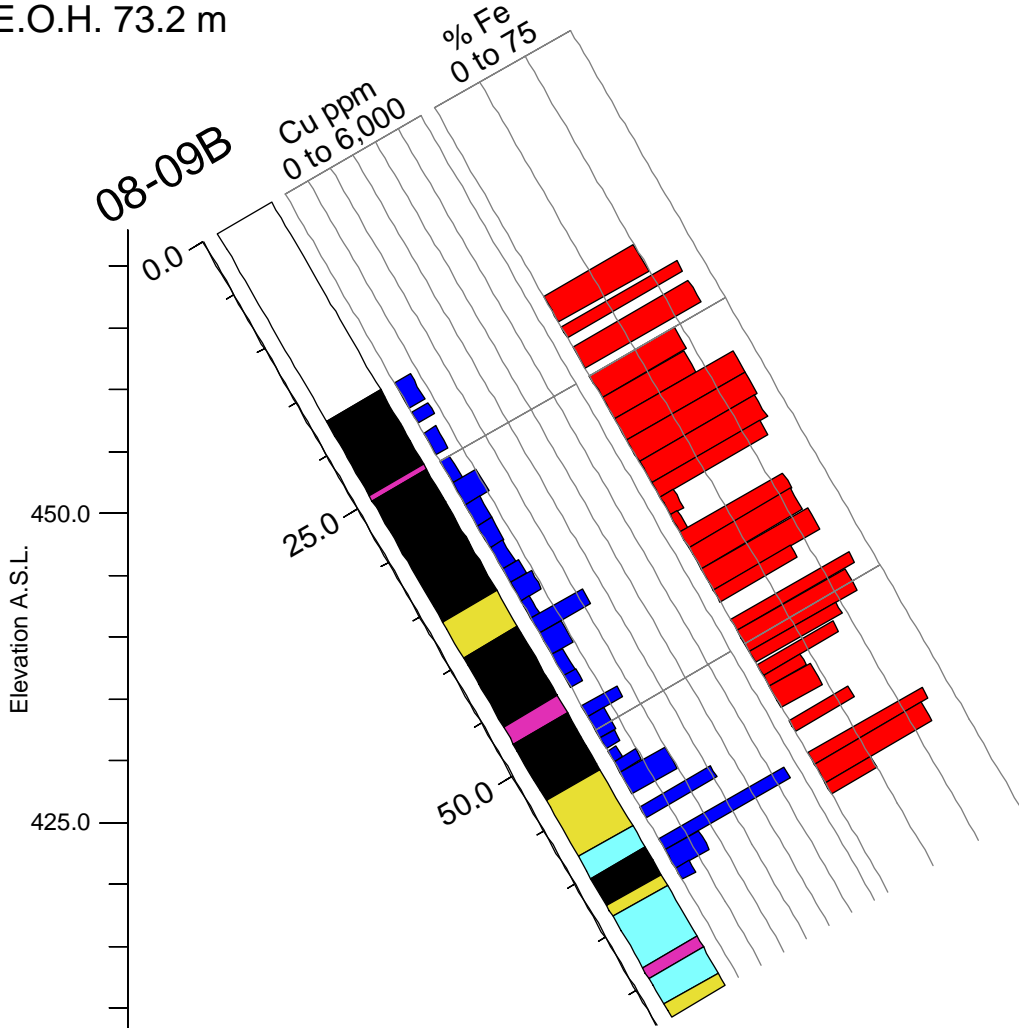
Elevation: 488 m

dip -60°

Azimuth 045°

E.O.H. 73.2 m

- Lithology
- Biotite-Gabbro Porphyrite
 - Diorite
 - Gabbro
 - Obliterated-Propylitic
 - Obliteration-Silicic
 - Massive Magnetite
 - Hornblendite
 - Skarn
 - Marble



Intersections

From (m)	To (m)	Total Length (m)	Average Fe %	Average S%	Average Cu ppm
17.60	20.00	2.40	49.70	2.87	695.00
20.40	21.40	1.00	63.80	3.37	720.00
22.30	24.30	2.00	63.80	2.28	526.00
25.00	36.30	11.30	57.59	2.70	663.12
39.60	46.10	6.50	54.87	4.08	1009.28
47.80	51.80	4.00	58.05	2.92	886.00
52.00	53.00	1.00	41.90	2.12	357.00
57.20	58.20	1.00	32.70	9.38	3130.00
60.25	63.00	2.75	60.58	6.20	2958.64

Cumulative Thickness	31.95 m	@	56.07 % Fe
		@	3.51 % S
		@	1022.25 ppm Cu

Pad 5

Location: 388690E 5391092N

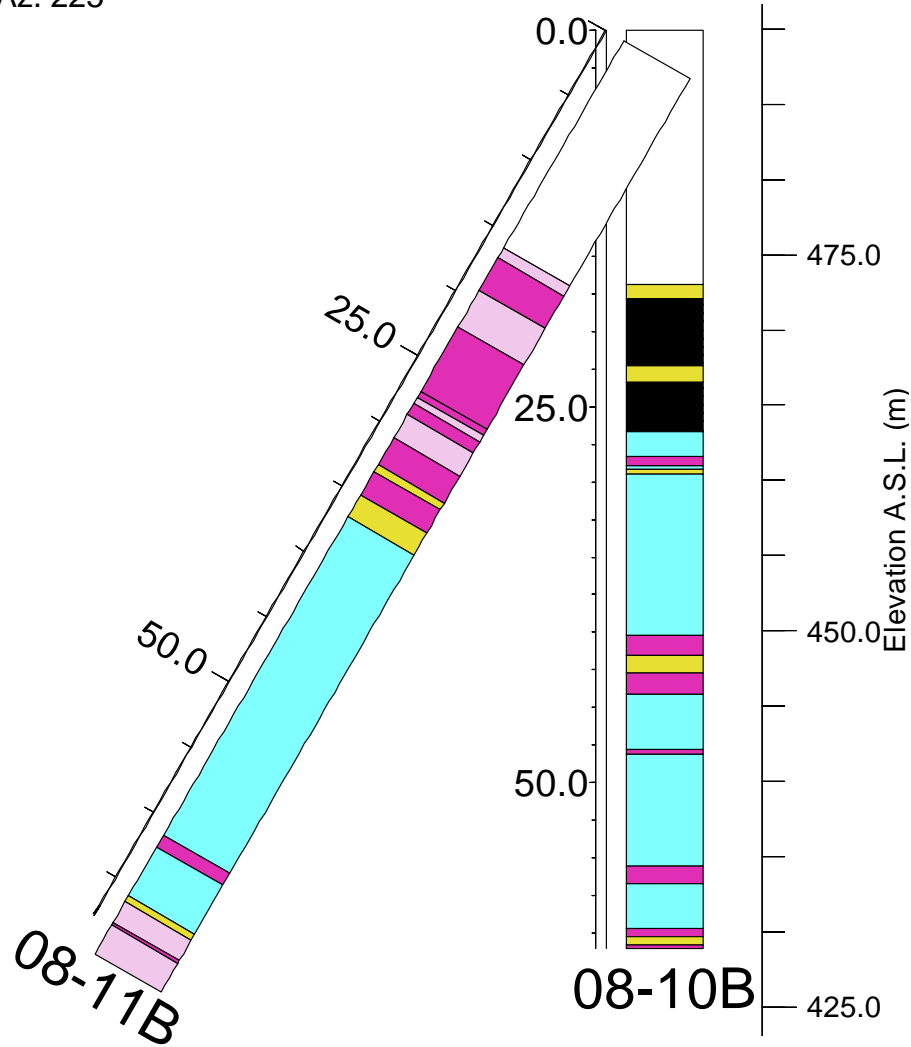
Elevation: 488 m

DDH-08-10B dip -90° Az. n/a

DDH-08-11B dip -60° Az. 225°

225 SW ←

- Lithology
- Biotite-Gabbro Porphyrite
 - Diorite
 - Gabbro
 - Obliterated-Propylitic
 - Obliteration-Silicic
 - Massive Magnetite
 - Hornblendite
 - Skarn
 - Marble



DDH-08-10B

Location: 388690E 5391092N

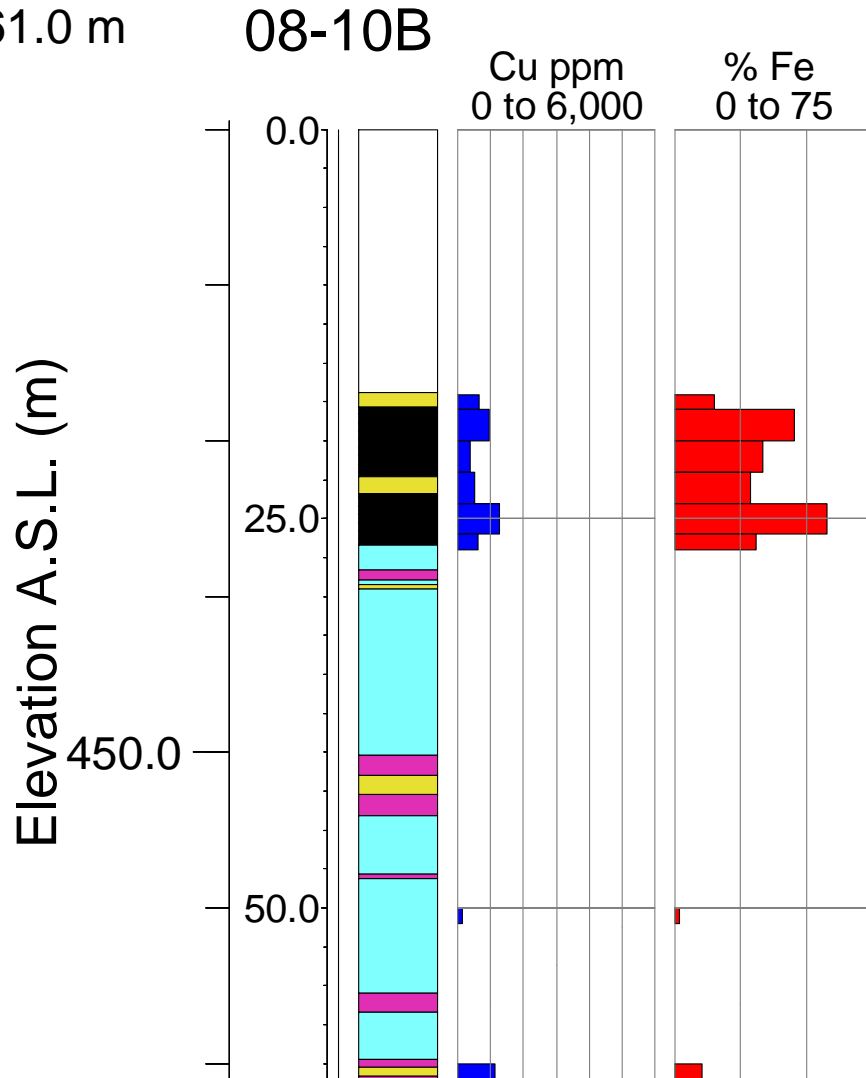
Elevation: 488 m

dip -90°

Azimuth n/a

E.O.H. 61.0 m

- Lithology
- Biotite-Gabbro Porphyrite
 - Diorite
 - Gabbro
 - Obliterated-Propylitic
 - Obliteration-Silicic
 - Massive Magnetite
 - Hornblendite
 - Skarn
 - Marble



Intersections

From (m)	To (m)	Total Length (m)	Average Fe %	Average S%	Average Cu ppm
18.00	22.00	4.00	39.55	2.87	664.00
24.00	27.00	3.00	48.70	4.36	1043.33

Cumulative
Thickness

7.00 m @ 43.47% Fe
 @ 3.51% S
 @ 826.57 ppm Cu

DDH-08-11B

Location: 388690E 5391092N

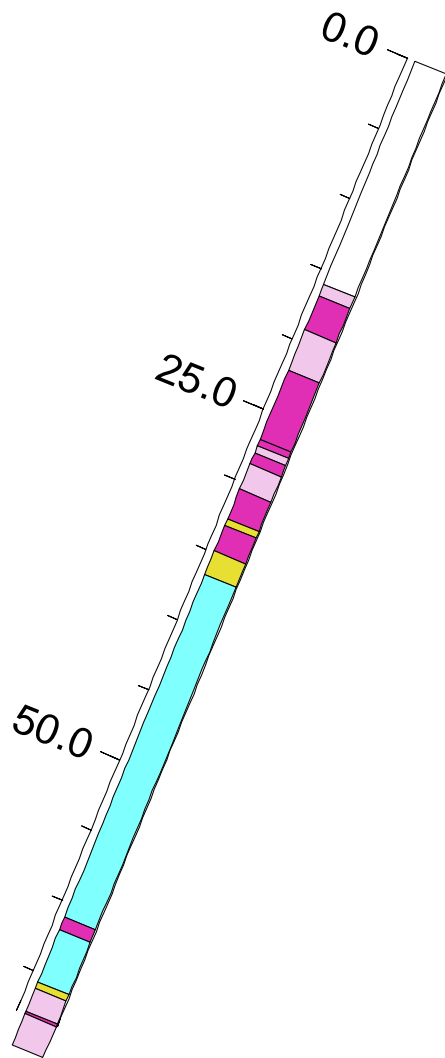
Elevation: 488 m

dip -60°

Azimuth 225°

E.O.H. 67.9 m

No Intersections



Lithology

- Biotite-Gabbro Porphyrite
- Diorite
- Gabbro
- Obliterated-Propylitic
- Obliteration-Silicic
- Massive Magnetite
- Hornblendite
- Skarn
- Marble

Pad 6

Location: 388698E 5391267N

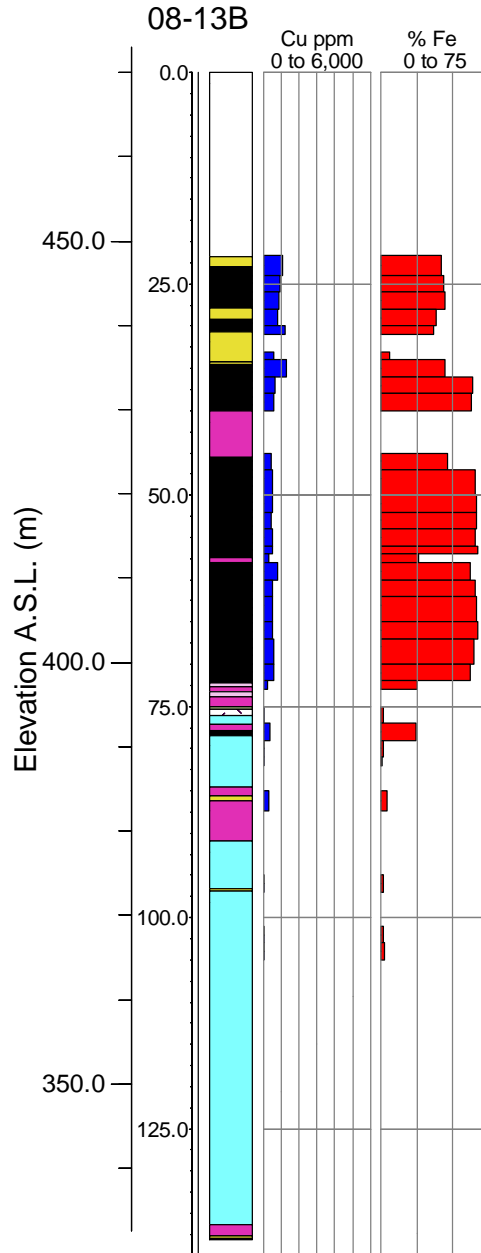
Elevation: 470 m

DDH-08-13B

Dip -90°

Azimuth n/a

E.O.H. 140.2 m



- Lithology
- Biotite-Gabbro Porphyrite
 - Diorite
 - Gabbro
 - Obliterated-Propylitic
 - Obliteration-Silicic
 - Massive Magnetite
 - Hornblendite
 - Skarn
 - Marble

Intersections

From (m)	To (m)	Total Length (m)	Average Fe %	Average S%	Average Cu ppm
21.70	31.00	9.30	41.75	3.98	975.59
34.00	40.00	6.00	57.00	3.48	839.33
45.00	57.00	12.00	62.95	2.48	488.75
58.00	72.00	14.00	65.07	2.70	568.93
Cumulative Thickness			41.30 m @	58.03% Fe	
				@	3.04% S
				@	676.49 ppm Cu

Pad 7

Location: 388613E 5391255N 475.0

Elevation: 482 m

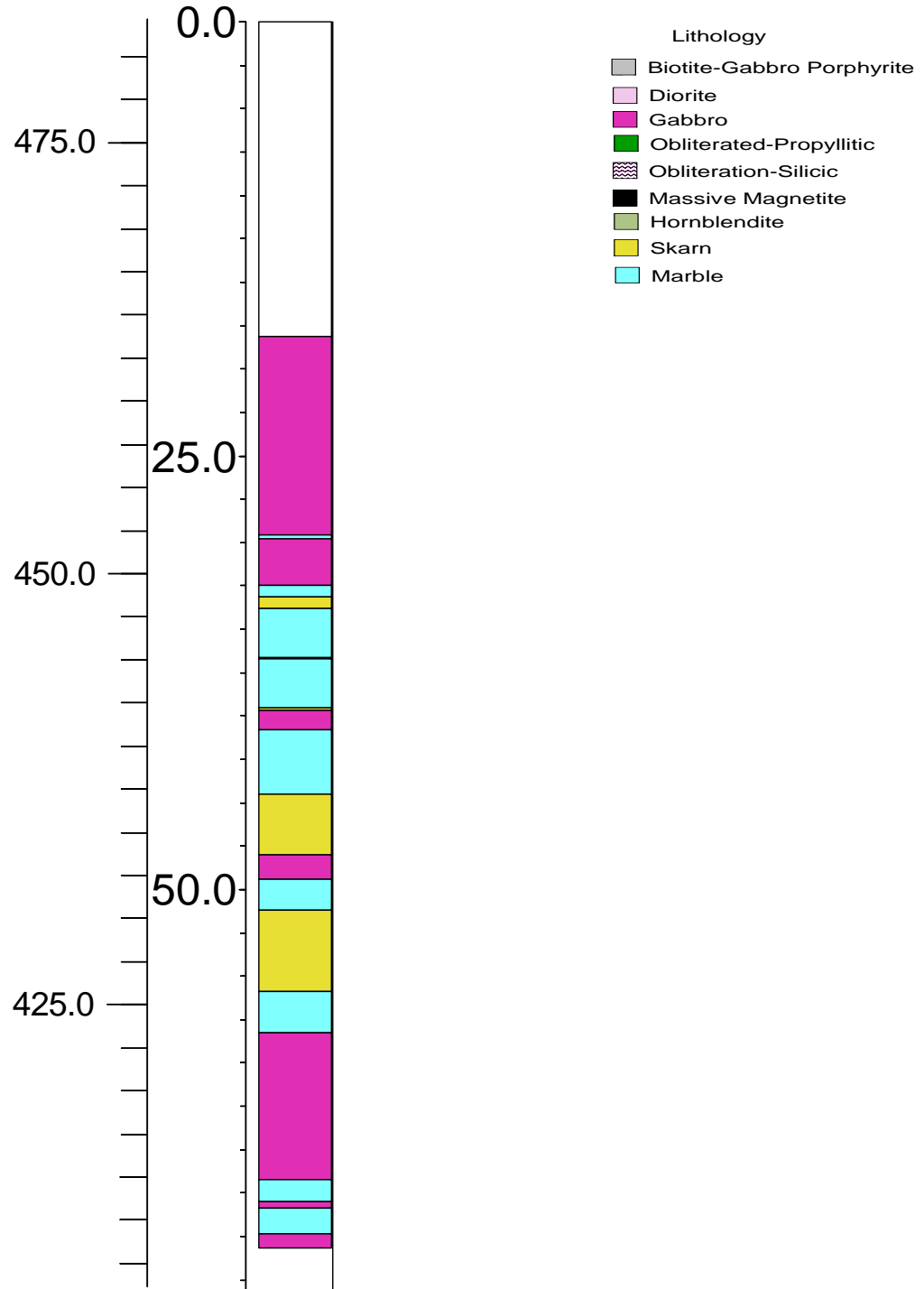
DDH-08-14B

Dip -90°

Azimuth n/a

E.O.H. 73.2 m

No intersections



Pad 8

Location: 388636E 5391229N

Elevation: 484 m

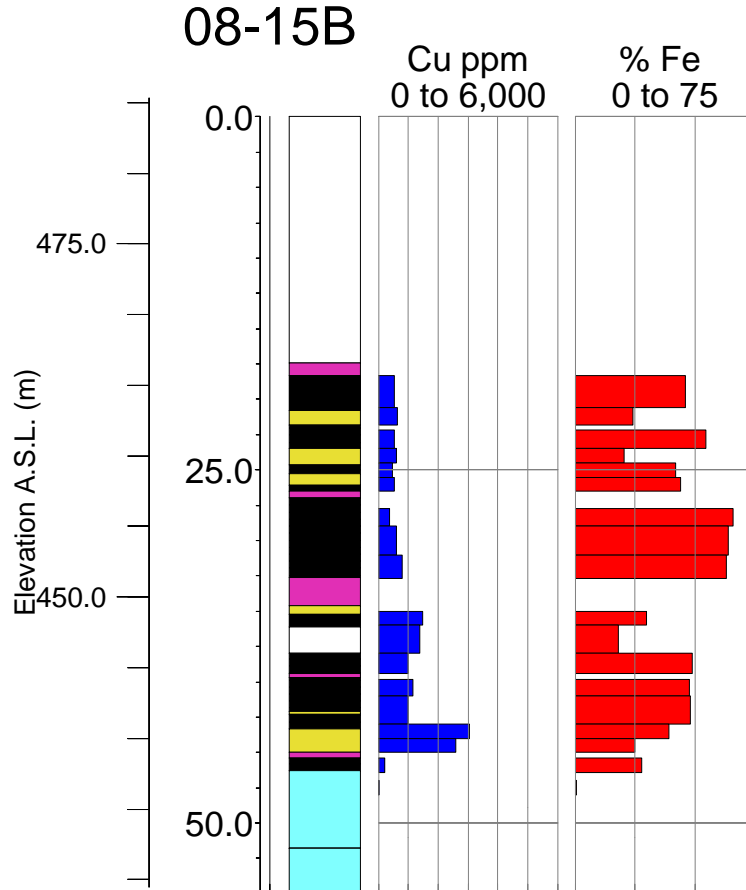
DDH-08-15B

Dip -90°

Azimuth n/a

E.O.H. 54.9 m

- Lithology
- Biotite-Gabbro Porphyrite
 - Diorite
 - Gabbro
 - Obliterated-Propylitic
 - Obliteration-Silicic
 - Massive Magnetite
 - Hornblendite
 - Skarn
 - Marble



Intersections					
From (m)	To (m)	Total Length (m)	Average Fe %	Average S%	Average Cu ppm
18.30	20.60	2.30	45.90	3.23	540.00
22.20	23.50	1.30	54.40	3.09	517.00
24.50	26.50	2.00	42.95	2.53	500.00
27.70	32.70	5.00	64.04	3.11	611.88
38.00	39.40	1.40	48.70	5.78	999.00
39.80	44.00	4.20	45.77	6.20	1521.90
Cumulative Thickness		16.20 m	@	52.03 % Fe	
			@	4.08 % S	
			@	849.64 ppm Cu	

Pad 9

Location: 388596E 5391357N

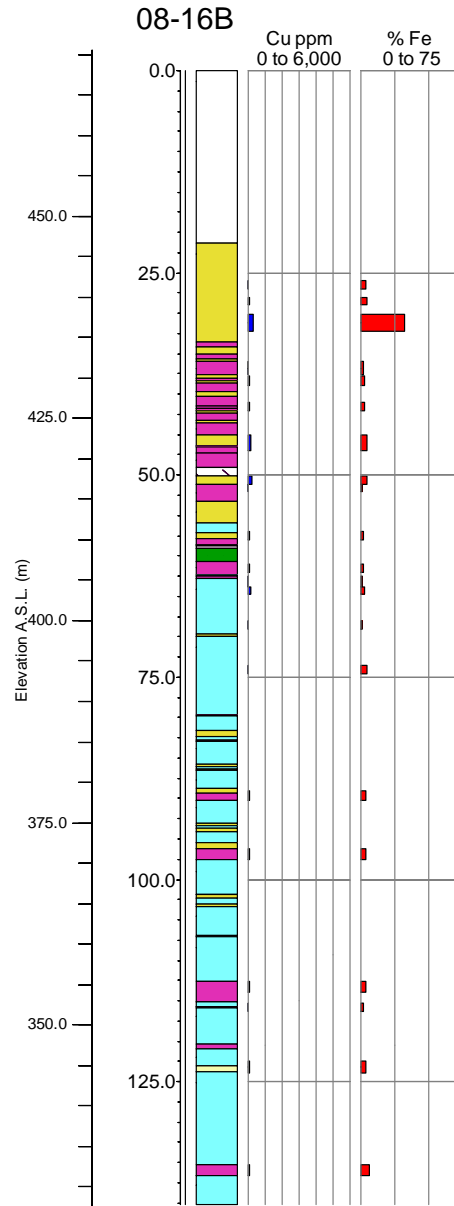
Elevation: 468 m A.M.S.

DDH-08-16B

Dip -90°

Azimuth n/a

E.O.H. 140.2 m



- Lithology
- Biotite-Gabbro Porphyrite
 - Diorite
 - Gabbro
 - Obliterated-Propylitic
 - Obliteration-Silicic
 - Massive Magnetite
 - Hornblendite
 - Skarn
 - Marble

Intersections						
From (m)	To (m)	Total Length (m)	Average Fe %	Average S%	Average Cu ppm	
30.20	32.20	2.00	31.70	0.64	289.00	

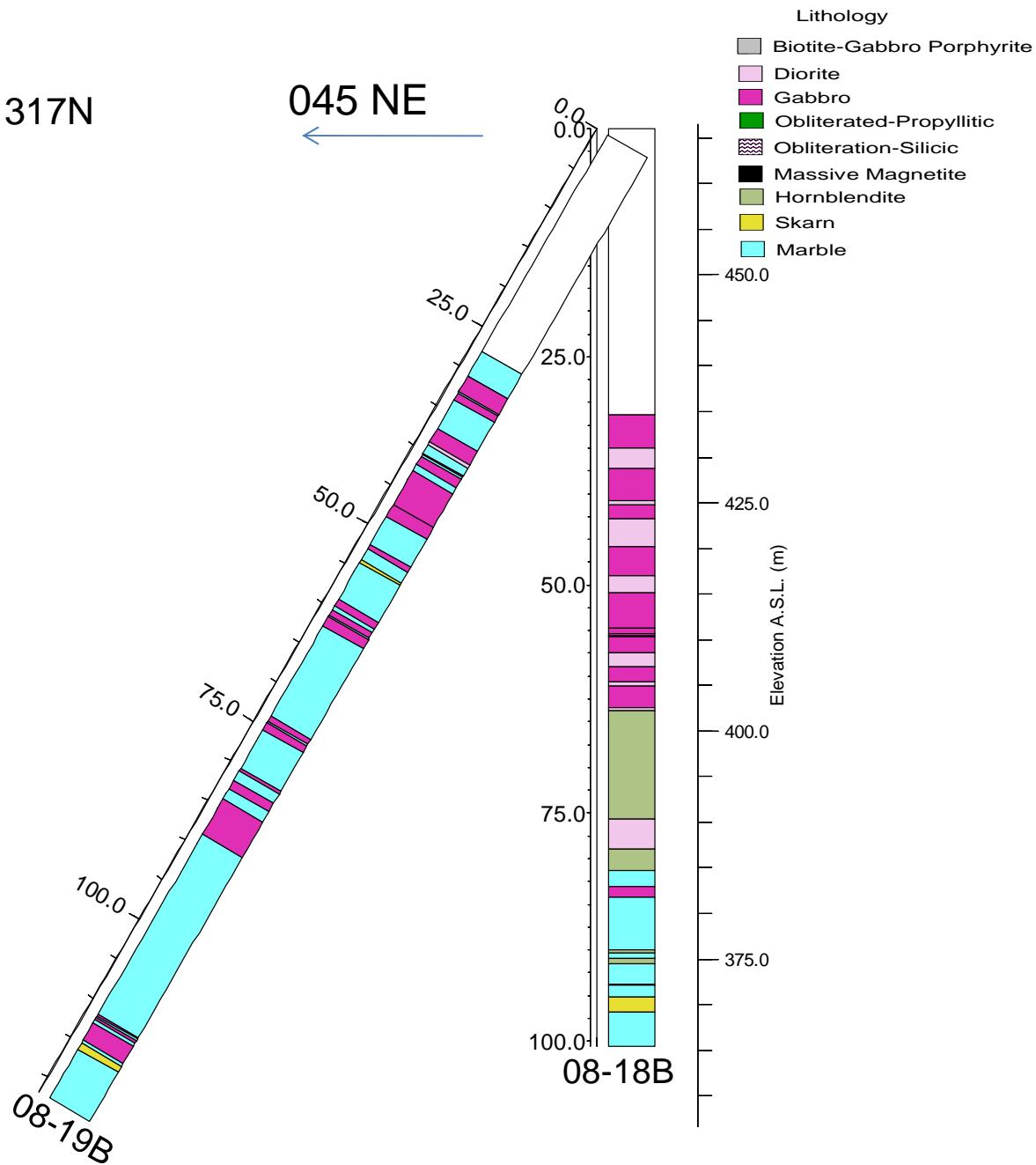
Pad 11

Location: 388766E 5391317N

Elevation: 466 m

DDH-08-18B dip -90° Az. n/a

DDH-08-19B dip -60° Az. 045°



DDH-08-18B

Location: 388766E 5391317N

Elevation: 466 m

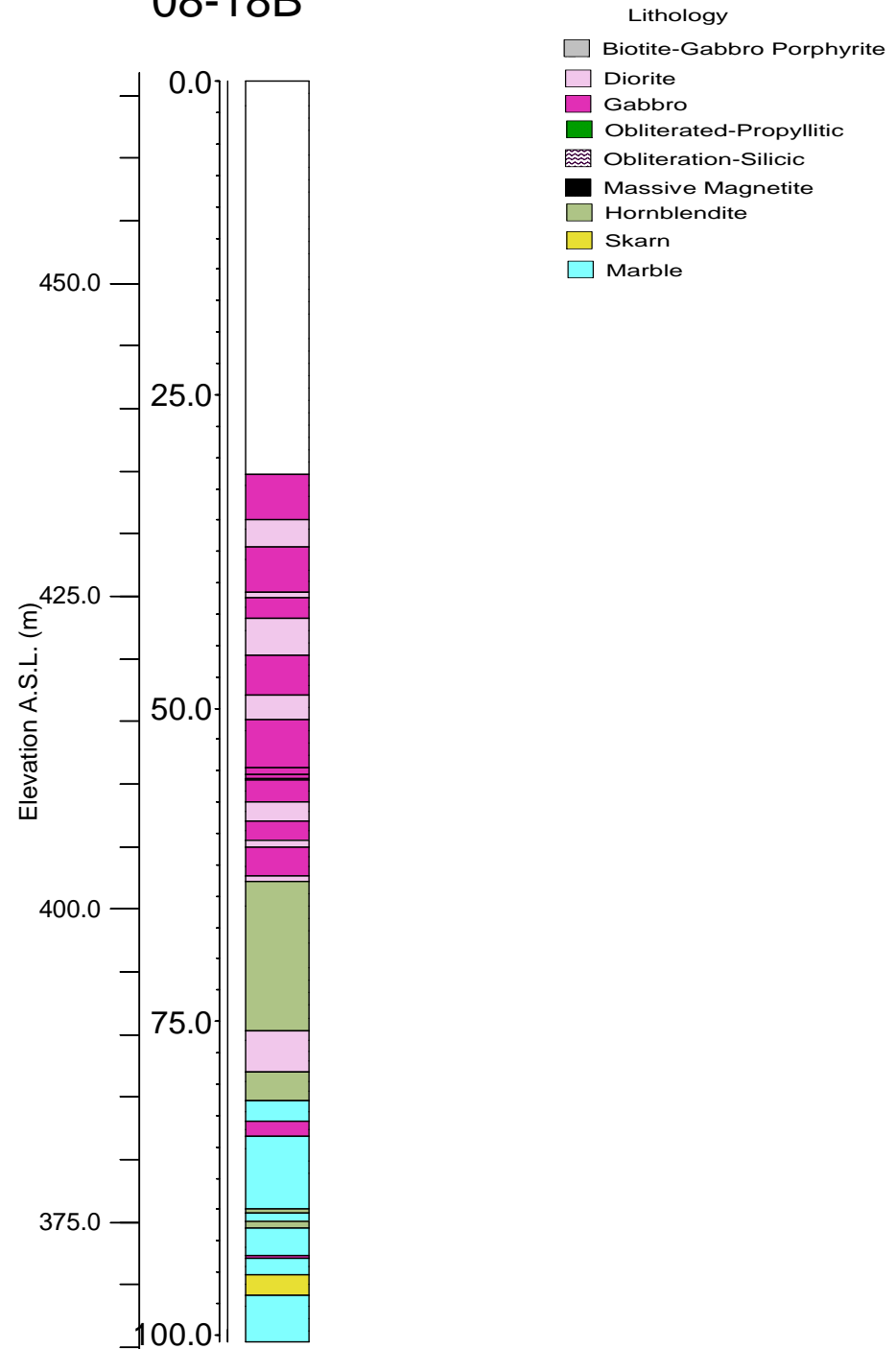
Collar dip: -90°

Azimuth: n/a

E.O.H: 100.6m

No intersections

08-18B



DDH-08-19B

Location: 388766E 5391317N

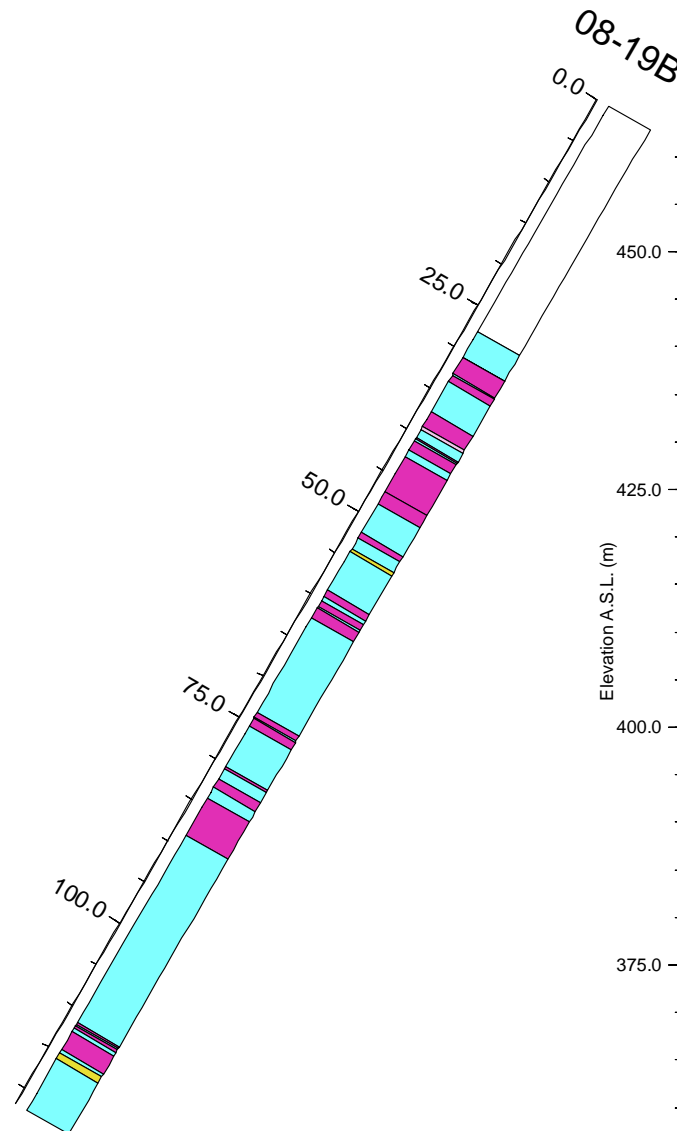
Elevation: 466 m

Collar dip: -60°

Azimuth: 045°

E.O.H: 121.9m

No intersections



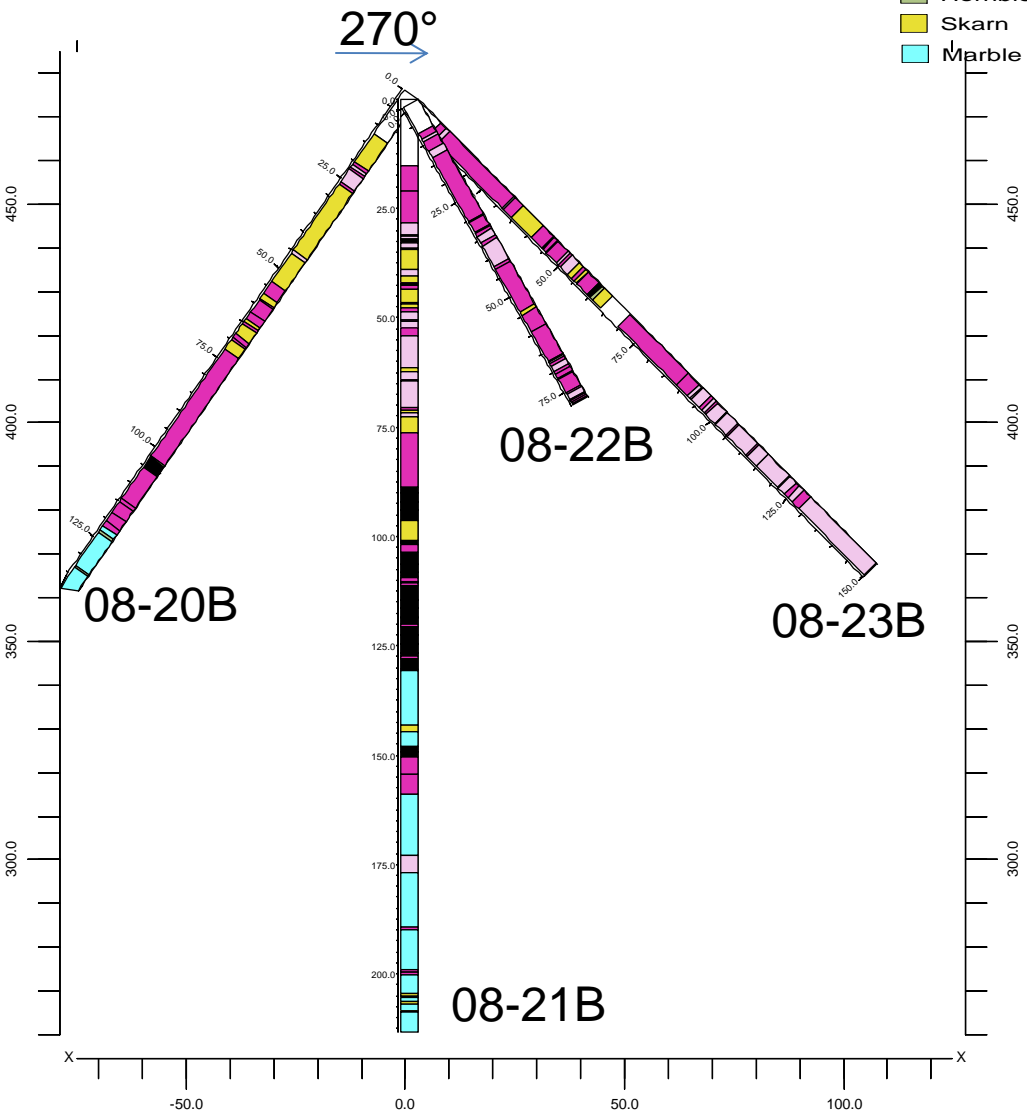
Pad 12

Location: 388757E 5390883N

Elevation: 474 m

DDH-08-20B Dip -55° Az 100°
DDH-08-21B Dip -90° Az n/a
DDH-08-22B Dip -45° Az 260°
DDH-08-23B Dip -60° Az 260°

- Lithology
- Biotite-Gabbro Porphyrite
 - Diorite
 - Gabbro
 - Obliterated-Propylitic
 - Obliteration-Silicic
 - Massive Magnetite
 - Hornblendite
 - Skarn
 - Marble



DDH-08-20B

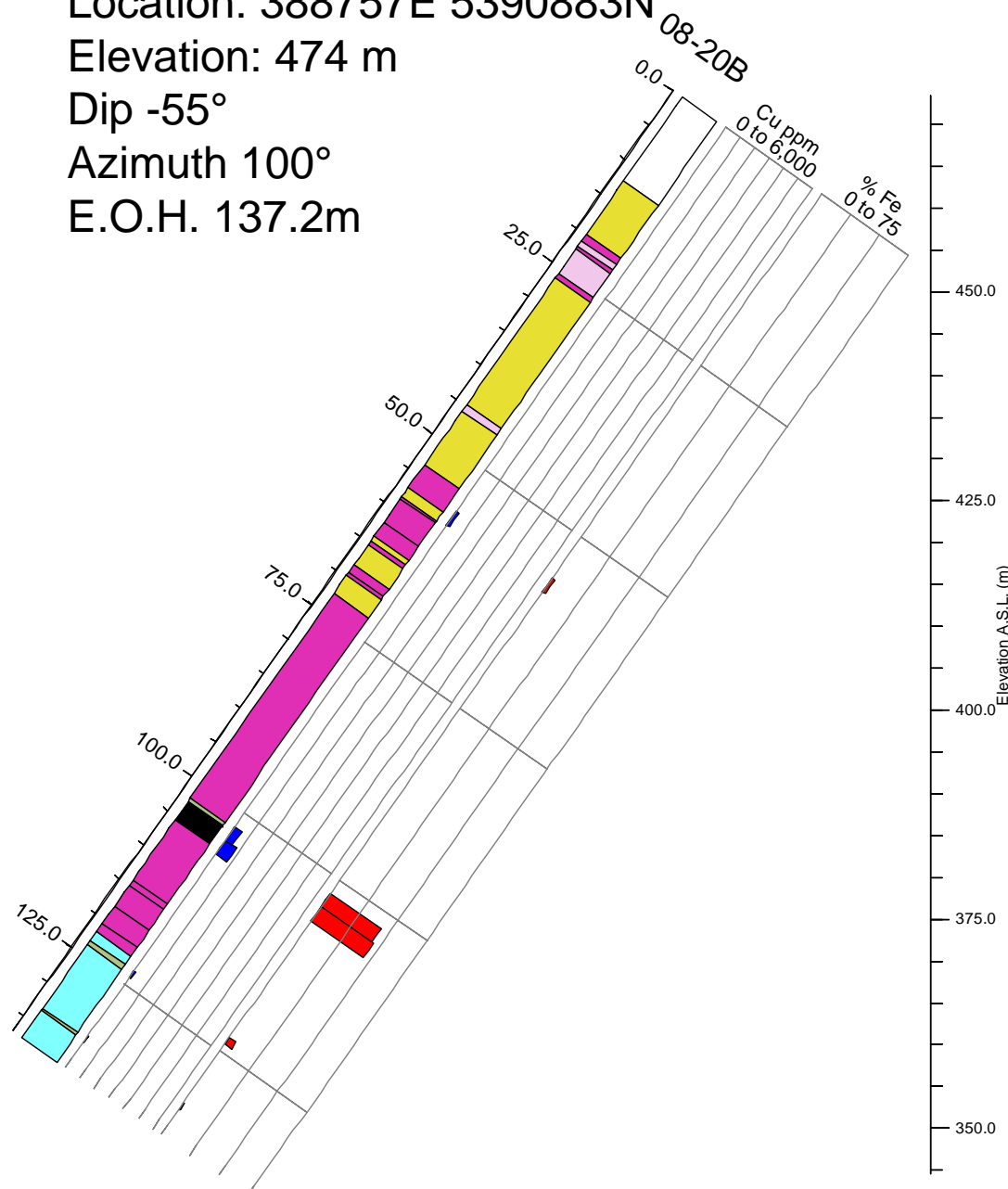
Location: 388757E 5390883N

Elevation: 474 m

Dip -55°

Azimuth 100°

E.O.H. 137.2m



- Lithology
- Biotite-Gabbro Porphyrite
 - Diorite
 - Gabbro
 - Obliterated-Propylitic
 - Obliteration-Silicic
 - Massive Magnetite
 - Hornblendite
 - Skarn
 - Marble

Intersections					
From (m)	To (m)	Total Length (m)	Average Fe %	Average S%	Average Cu ppm
102.00	106.00	4.00	44.45	1.74	622.50

DDH-08-21B

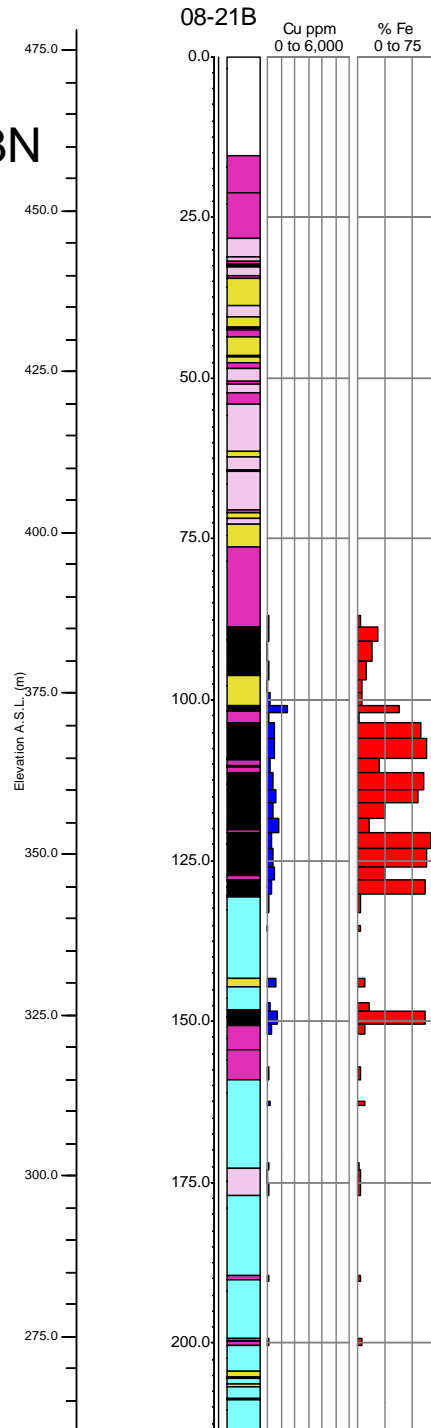
Location: 388757E 5390883N

Elevation: 474 m

Dip -90°

Azimuth n/a

E.O.H. 213.4m



- Lithology**
- Biotite-Gabbro Porphyrite
 - Diorite
 - Gabbro
 - Obliterated-Propylitic
 - Obliteration-Silicic
 - Massive Magnetite
 - Hornblendite
 - Skarn
 - Marble

Intersections

From (m)	To (m)	Total Length (m)	Average Fe %	Average S %	Average Cu ppm
101.00	102.00	1.00	38.50	3.93	1445.00
103.60	109.00	5.40	60.84	2.58	521.56
111.30	116.00	4.70	58.14	1.92	482.15
120.70	126.00	5.30	65.44	1.42	329.79
128.00	130.30	2.30	62.00	0.97	273.00
148.30	150.50	2.20	61.80	2.93	753.00

Cumulative Thickness 20.90 m @ 60.56 % Fe @ 2.06 % S @ 505.26 ppm Cu

DDH-08-23B

Location: 388757E 5390883N

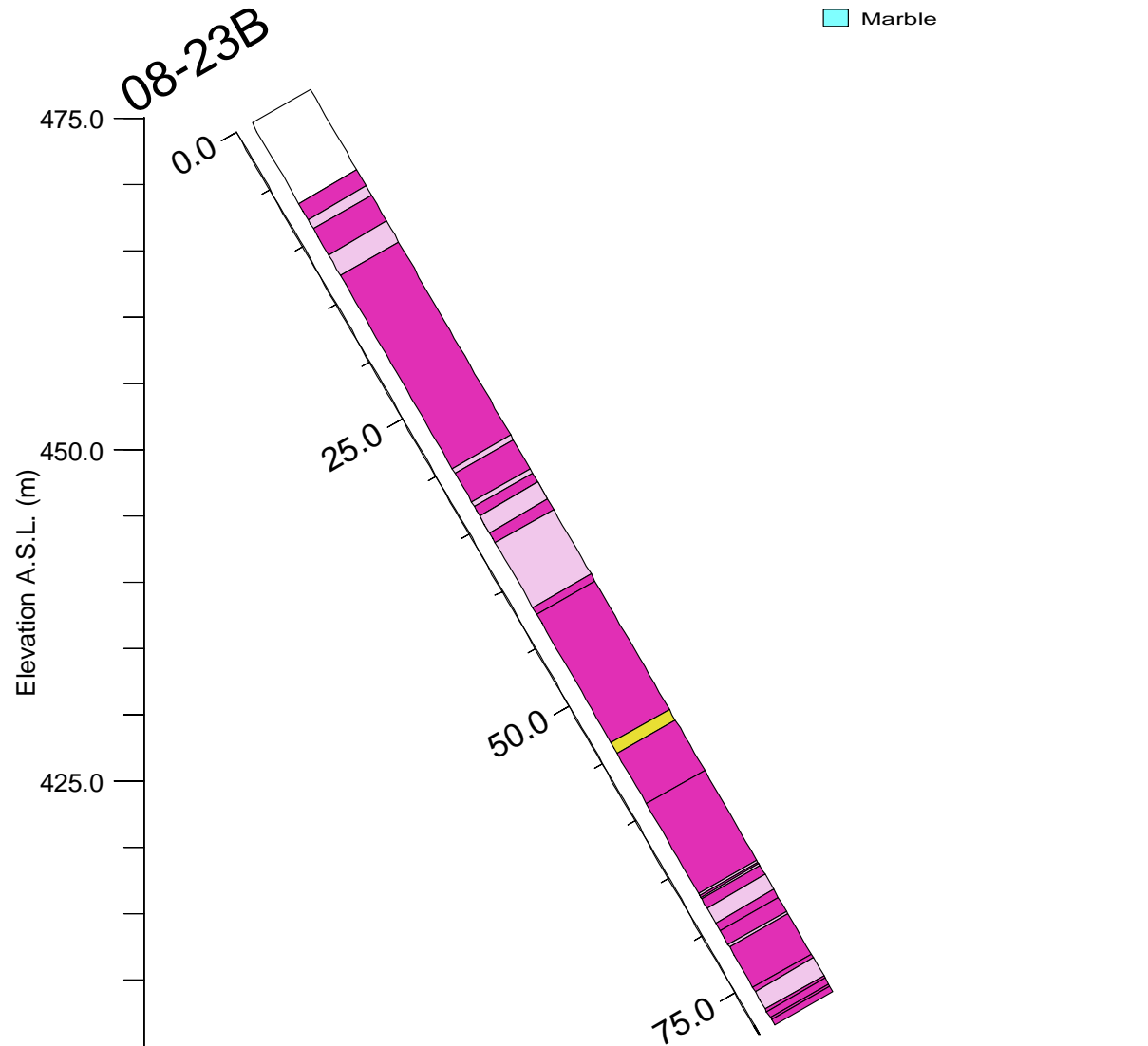
Elevation: 474 m

Dip -60°

Azimuth 260°

E.O.H. 78.6m

No Intersections



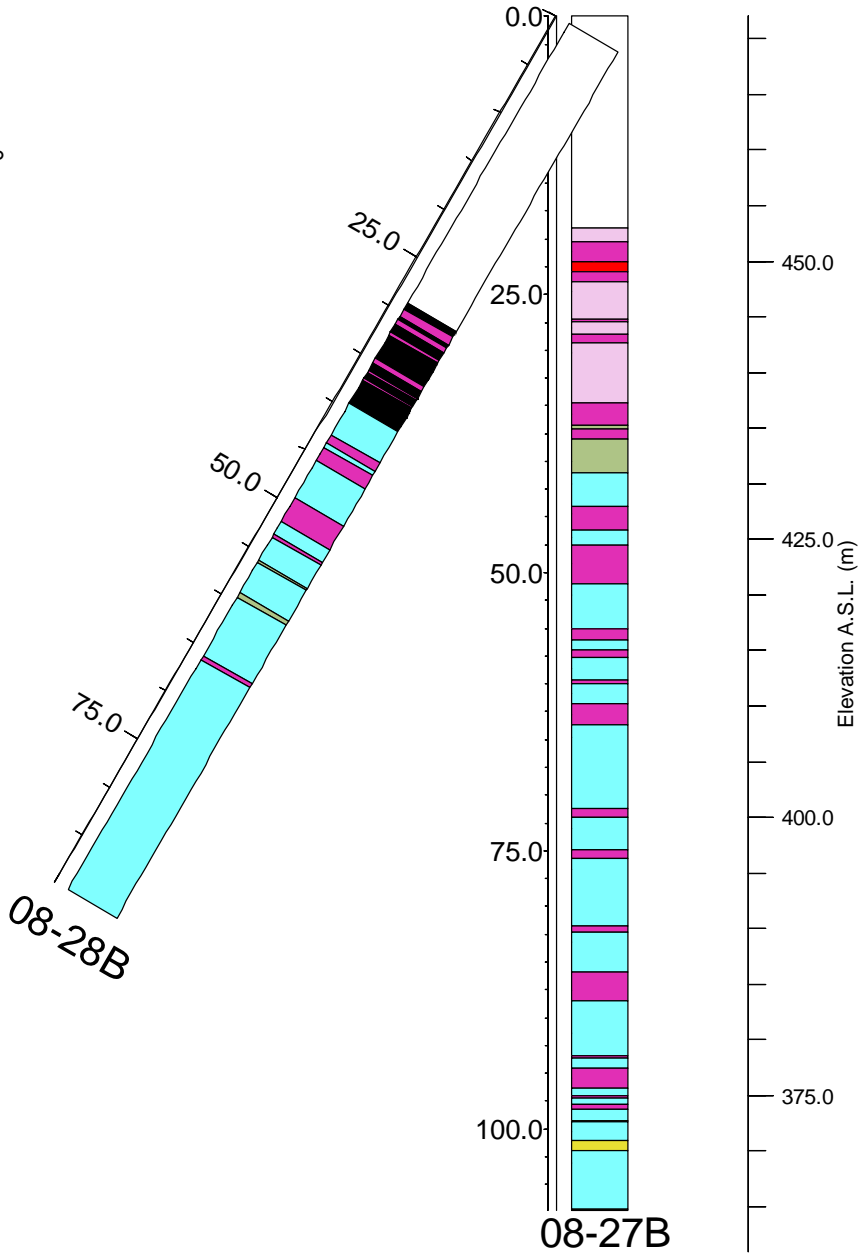
Pad 14

Location: 388788E 5390991N

Elevation: 472 m

DDH-08-27B Dip -90° Az n/a

DDH-08-28B Dip -60° Az 140°



- Lithology
- Biotite-Gabbro Porphyrite
 - Diorite
 - Gabbro
 - Obliterated-Propylitic
 - Obliteration-Silicic
 - Massive Magnetite
 - Hornblendite
 - Skarn
 - Marble

DDH-08-28B

Location: 388788E 5390991N

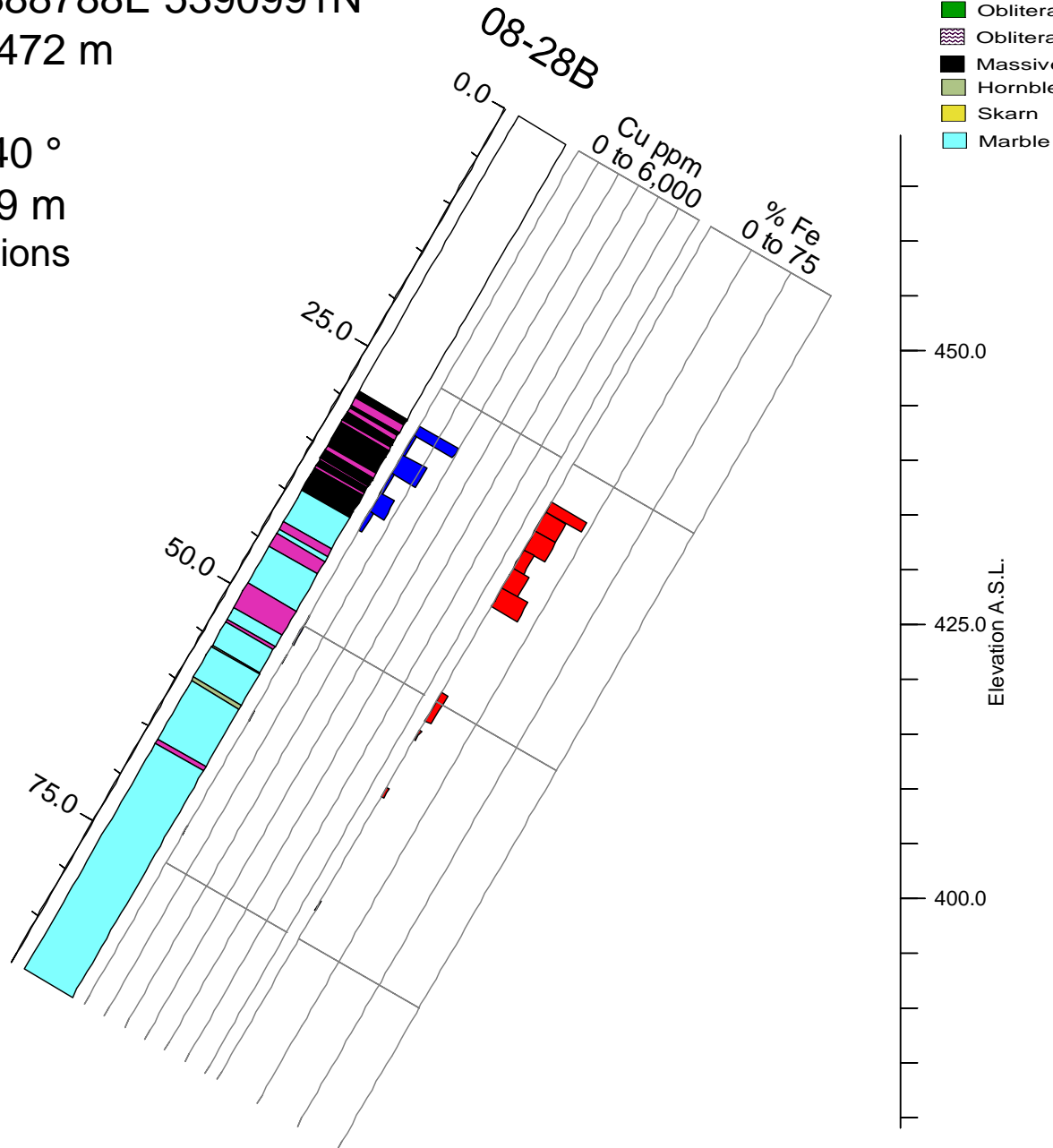
Elevation: 472 m

Dip -60 °

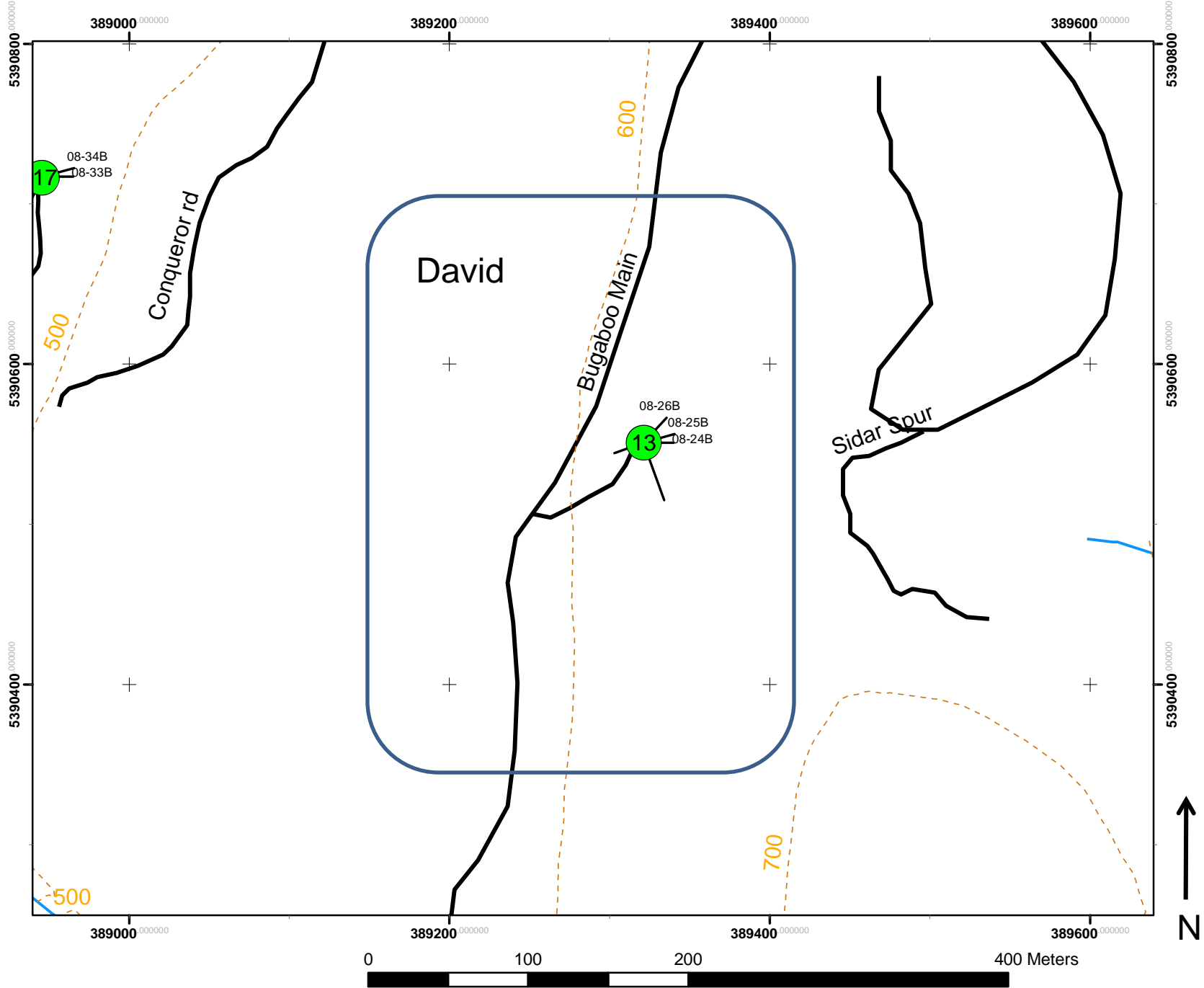
Azimuth 140 °

E.O.H. 89.9 m

No Intersections



- Lithology
- Biotite-Gabbro Porphyrite
 - Diorite
 - Gabbro
 - Obliterated-Propylitic
 - Obliteration-Silicic
 - Massive Magnetite
 - Hornblendite
 - Skarn
 - Marble

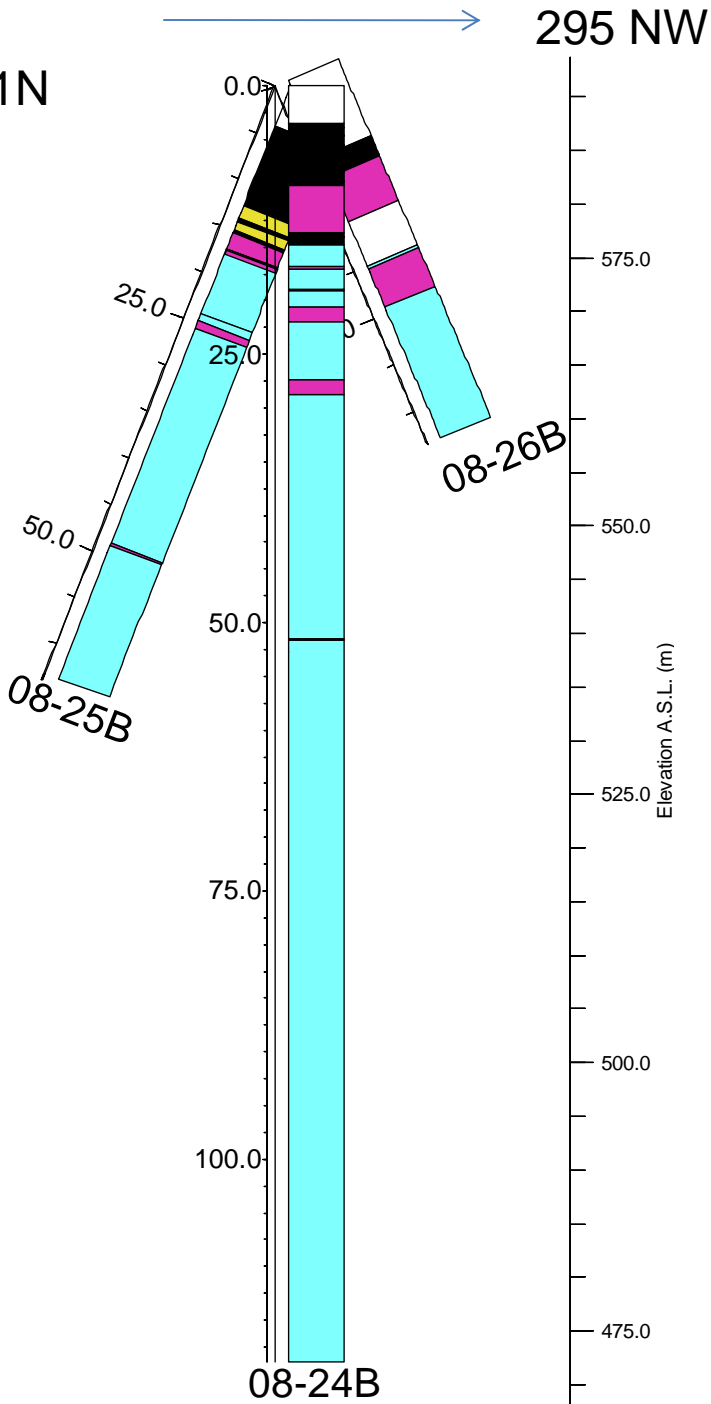


Pad 13

Location: 389321E 5390551N

Elevation: 591 m

- DDH-08-24B Dip -90° Az n/a
- DDH-08-25B Dip -60° Az 160°
- DDH-08-26B Dip -60° Az 250°



DDH-08-24B

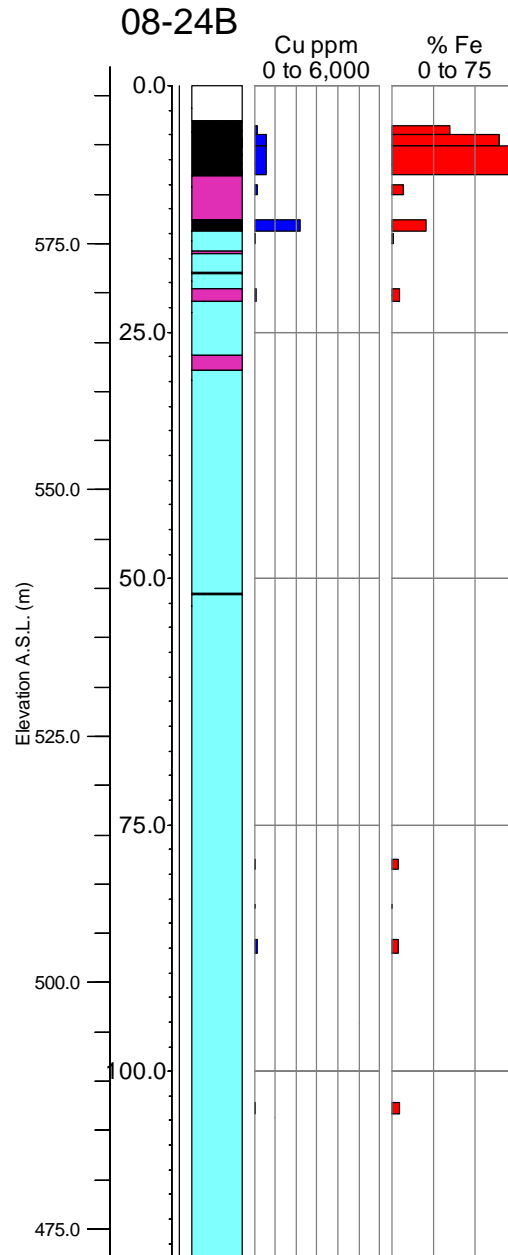
Location: 389321E 5390551N

Elevation: 591 m

Dip -90°

Azimuth 260°

E.O.H. 118.9m



- Lithology
- Biotite-Gabbro Porphyrite
 - Diorite
 - Gabbro
 - Obliterated-Propylitic
 - Obliteration-Silicic
 - Massive Magnetite
 - Hornblendite
 - Skarn
 - Marble

Intersections

From (m)	To (m)	Total Length (m)	Average Fe %	Average S%	Average Cu ppm
4.00	9.00	5.00	61.58	1.25	465.90

DDH-08-25B

Location: 389321E 5390551N

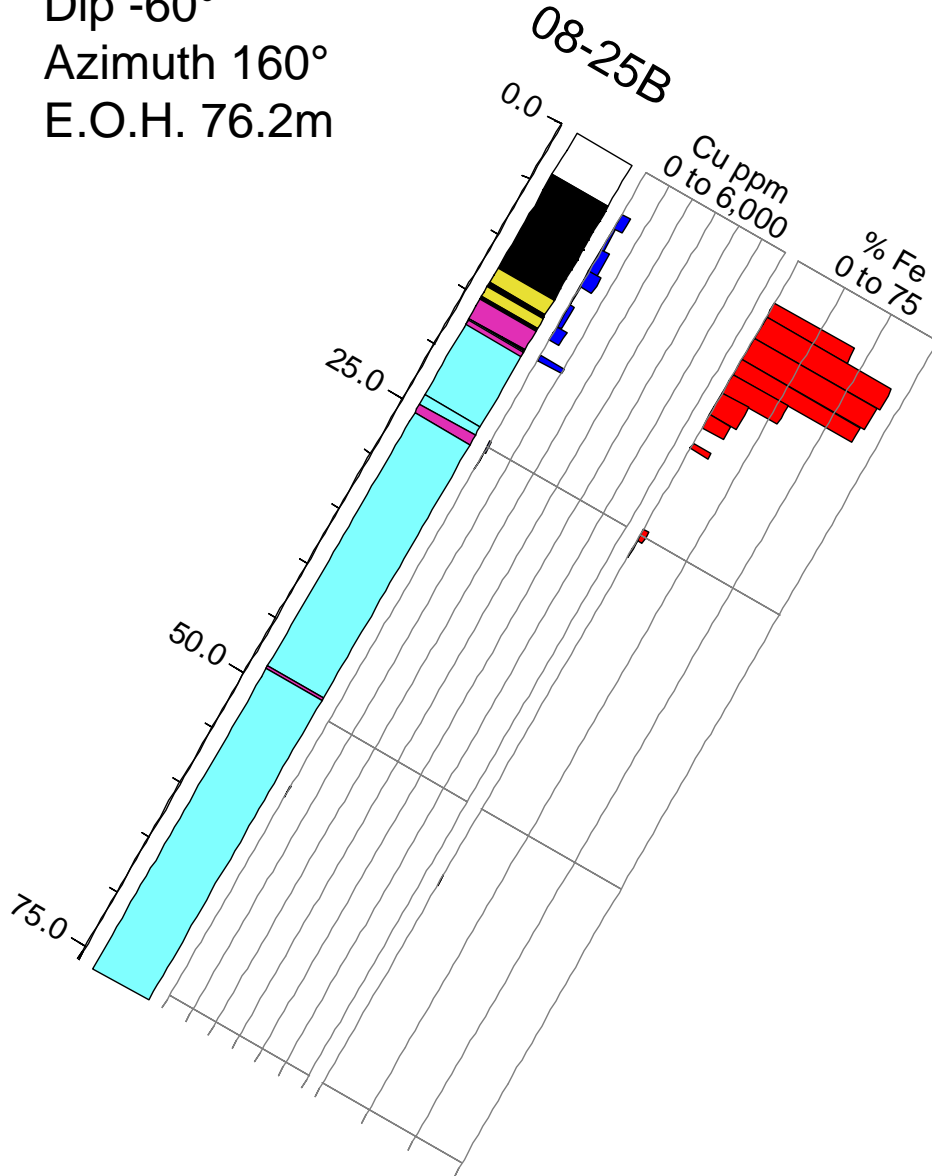
Elevation: 591 m

Dip -60°

Azimuth 160°

E.O.H. 76.2m

- Lithology
- Biotite-Gabbro Porphyrite
 - Diorite
 - Gabbro
 - Obliterated-Propylitic
 - Obliteration-Silicic
 - Massive Magnetite
 - Hornblendite
 - Skarn
 - Marble



Elevation A.S.L. (m)

575.0

550.0

525.0

Intersections						
From (m)	To (m)	Total Length (m)	Average Fe %	Average S%	Average Cu ppm	
3.80	10.35	6.55	61.57	0.74	307.05	

DDH-08-26B

Location: 389321E 5390551N

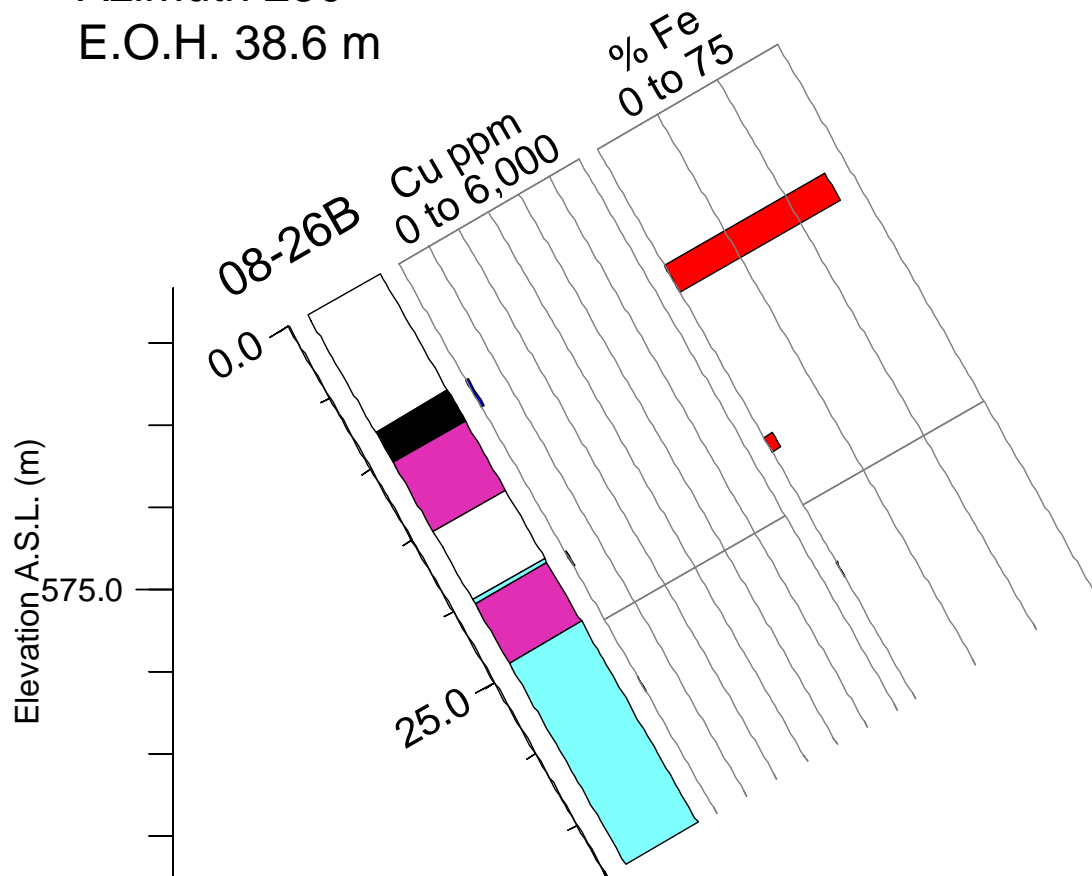
Elevation: 591 m

Dip -90°

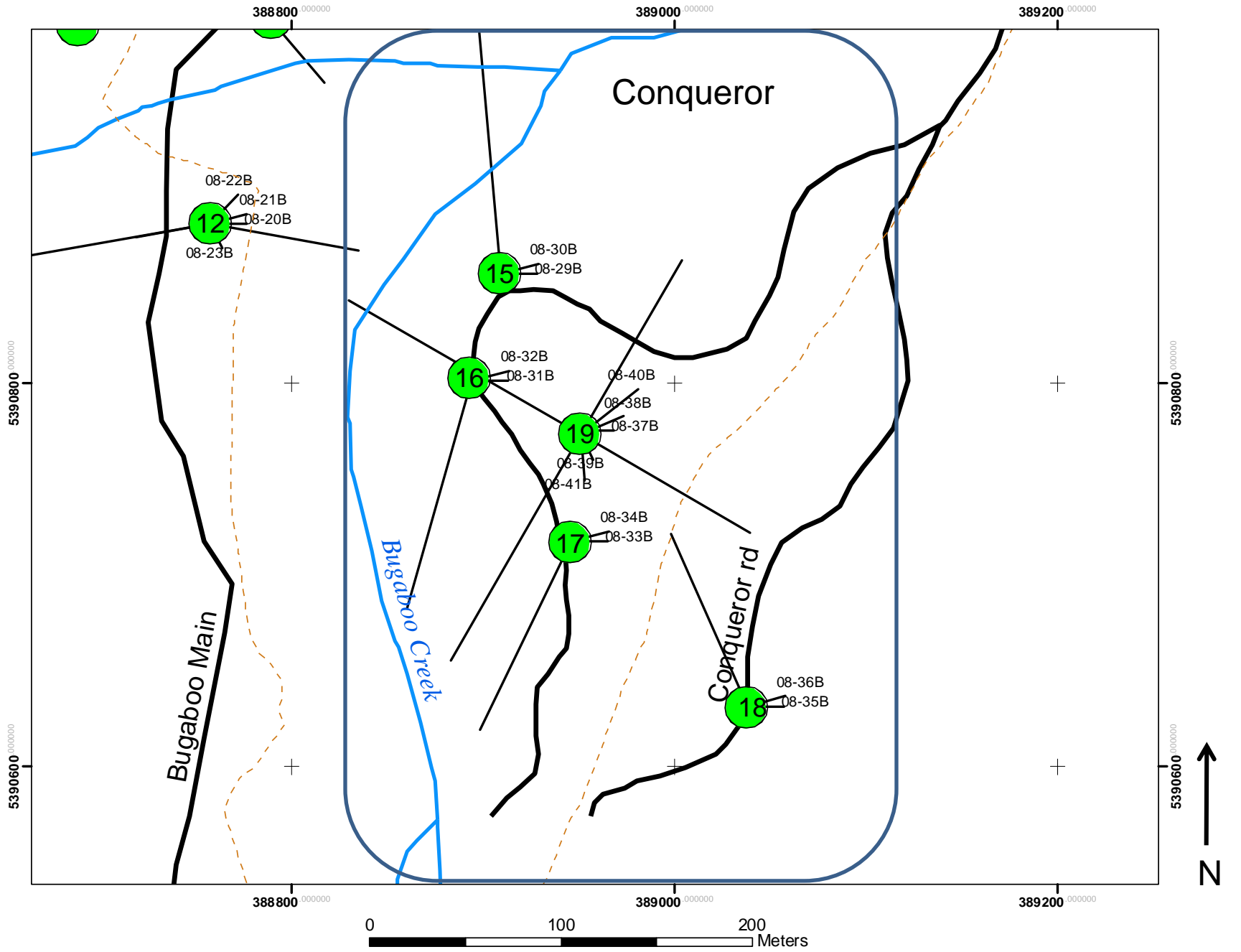
Azimuth 250°

E.O.H. 38.6 m

- Lithology
- Biotite-Gabbro Porphyrite
 - Diorite
 - Gabbro
 - Obliterated-Propylitic
 - Obliteration-Silicic
 - Massive Magnetite
 - Hornblendite
 - Skarn
 - Marble



Intersections					
From (m)	To (m)	Total Length (m)	Average Fe %	Average S%	Average Cu ppm
8.20	10.10	1.90	66.60	0.22	83.00



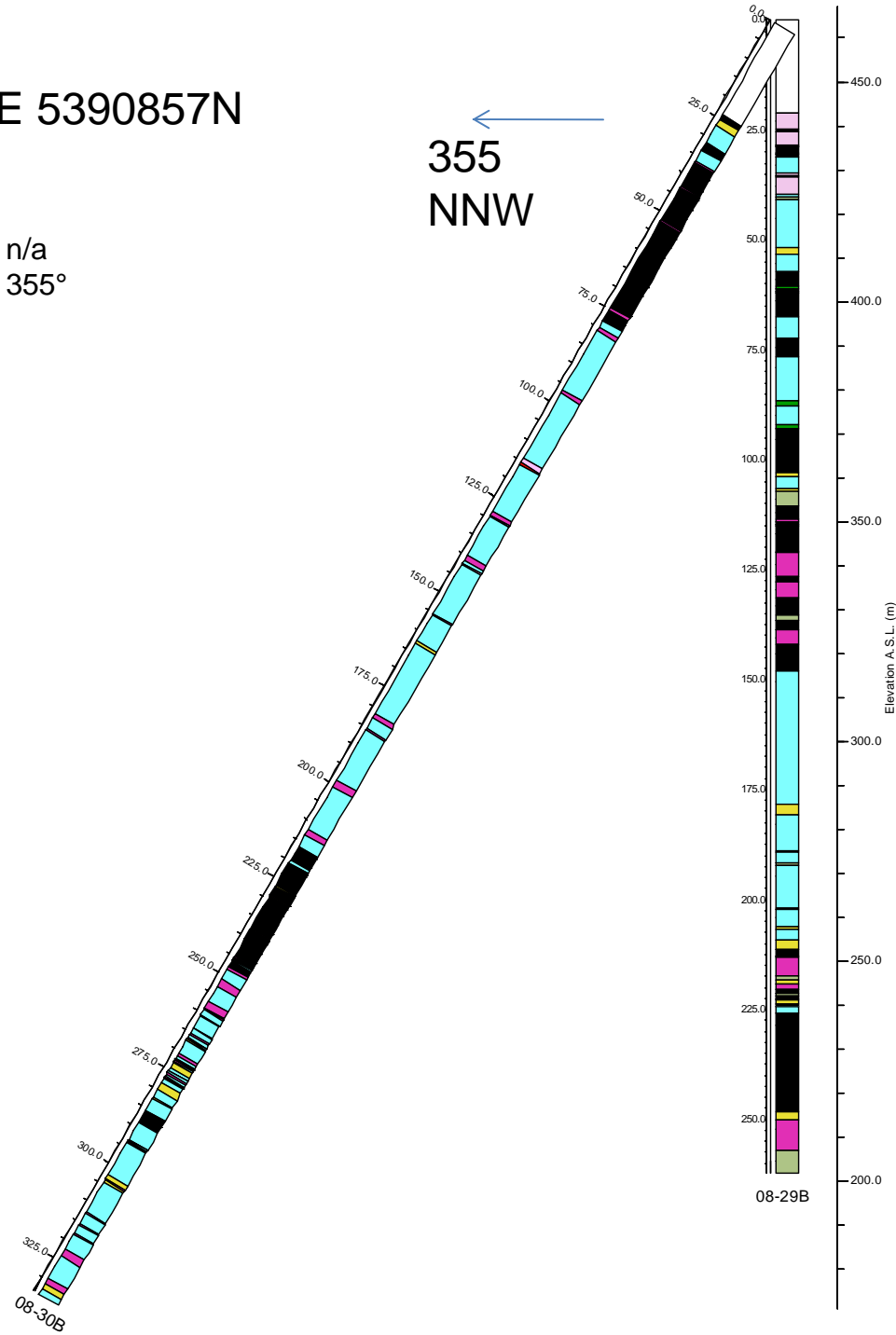
Pad 15

Location: 388909E 5390857N

Elevation: 464 m

DDH-08-29B Dip -90° Az n/a

DDH-08-30B Dip -60° Az 355°



- Lithology**
- Biotite-Gabbro Porphyrite
 - Diorite
 - Gabbro
 - Obliterated-Propylitic
 - Obliteration-Silicic
 - Massive Magnetite
 - Hornblendite
 - Skarn
 - Marble

Elevation A.S.L. (m)

08-29B

DDH-08-29B

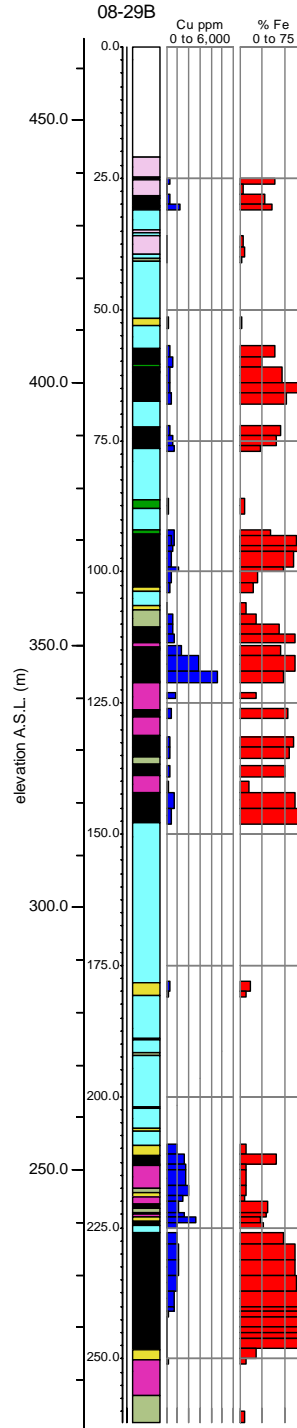
Location: 388909E 5390857N

Elevation: 464 m

Dip -90°

Azimuth n/a°

E.O.H. 262.1m



- Lithology**
- Biotite-Gabbro Porphyrite
 - Diorite
 - Gabbro
 - Obliterated-Propylitic
 - Obliteration-Silicic
 - Massive Magnetite
 - Hornblendite
 - Skarn
 - Marble

Intersections

From (m)	To (m)	Total Length (m)	Average Fe %	Average S%	Average Cu ppm
25.00	26.00	1.00	39.00	3.21	320.00
30.00	31.00	1.00	36.10	3.77	1245.00
57.00	59.00	2.00	39.00	3.05	308.00
61.00	68.00	7.00	54.01	1.84	378.57
72.00	76.00	4.00	43.85	2.19	452.50
92.00	95.00	3.00	34.00	9.74	701.00
93.00	96.00	3.00	63.20	1.90	468.00
95.00	100.00	5.00	59.34	2.99	547.00
110.00	113.50	3.50	51.76	1.74	586.71
114.00	121.00	7.00	53.27	2.89	2941.43
126.00	128.00	2.00	54.20	0.86	398.00
131.50	135.50	4.00	58.40	1.14	293.50
137.00	139.00	2.00	50.00	0.99	271.00
142.00	148.00	6.00	67.90	3.02	592.00
211.00	213.00	2.00	41.20	3.26	1550.00
220.00	222.00	2.00	31.50	1.96	1115.00
226.00	248.00	22.00	63.13	1.77	685.45

Cumulative Thickness 76.50 m @ 55.33% Fe
 @ 2.44% S
 @ 810.46 ppm Cu

Pad 16

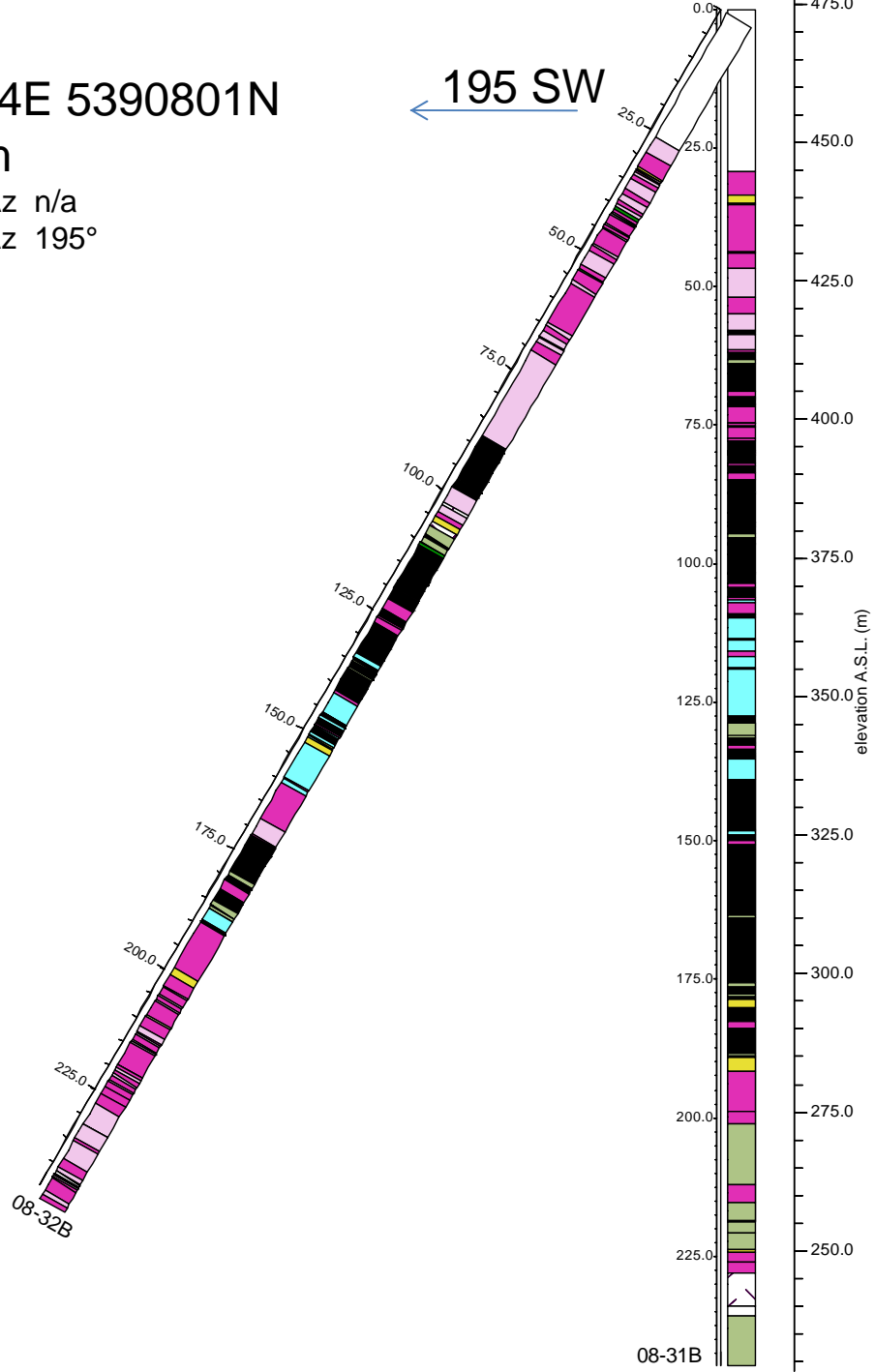
Location: 388894E 5390801N

Elevation: 474 m

DDH-08-31B Dip -90° Az n/a

DDH-08-32B Dip -60° Az 195°

← 195 SW



- Lithology
- Biotite-Gabbro Porphyrite
 - Diorite
 - Gabbro
 - Obliterated-Propylitic
 - Obliteration-Silicic
 - Massive Magnetite
 - Hornblendite
 - Skarn
 - Marble

DDH-08-31B

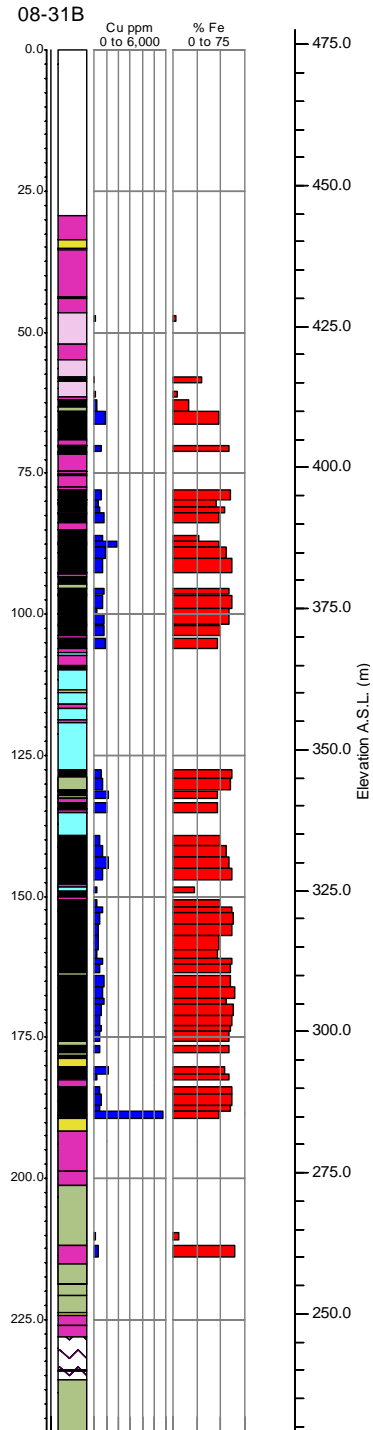
Location: 388894E 5390801N

Elevation: 474 m

Dip -90°

Azimuth n/a°

E.O.H. 244.8 m



- Lithology**
- Biotite-Gabbro Porphyrite
 - Diorite
 - Gabbro
 - Obliterated-Propylitic
 - Obliteration-Silicic
 - Massive Magnetite
 - Hornblendite
 - Skarn
 - Marble

Intersections

From (m)	To (m)	Total Length (m)	Average Fe %	Average S %	Average Cu ppm
58.00	59.00	1.00	30.50	0.03	8.00
64.00	66.30	2.30	48.50	2.65	957.00
70.10	71.00	0.90	58.20	2.41	548.00
77.90	79.60	1.70	59.10	3.56	534.00
79.80	83.70	3.90	48.07	2.47	582.82
87.00	92.60	5.60	56.91	2.73	1011.96
95.30	96.35	1.05	58.40	2.93	767.00
96.70	101.70	5.00	59.70	1.79	645.32
102.00	103.70	1.70	48.70	2.54	774.00
104.25	106.05	1.80	47.00	1.55	986.00
127.50	131.10	3.60	60.58	2.58	619.17
131.40	132.70	1.30	46.90	3.77	1125.00
133.45	135.20	1.75	46.60	4.60	1035.00
139.10	147.00	7.90	55.97	2.71	741.84
150.60	163.45	12.85	55.76	2.17	389.33
164.05	175.70	11.65	60.97	3.16	626.54
176.40	177.70	1.30	57.80	1.49	434.00
180.20	182.60	2.40	55.70	2.91	782.75
183.90	189.25	5.35	57.59	2.18	1728.28
212.00	214.00	2.00	63.90	0.41	280.00

Cumulative Thickness 75.05 m @ 56.00 % Fe
 @ 2.51 % S
 @ 727.34 ppm Cu

DDH-08-32B

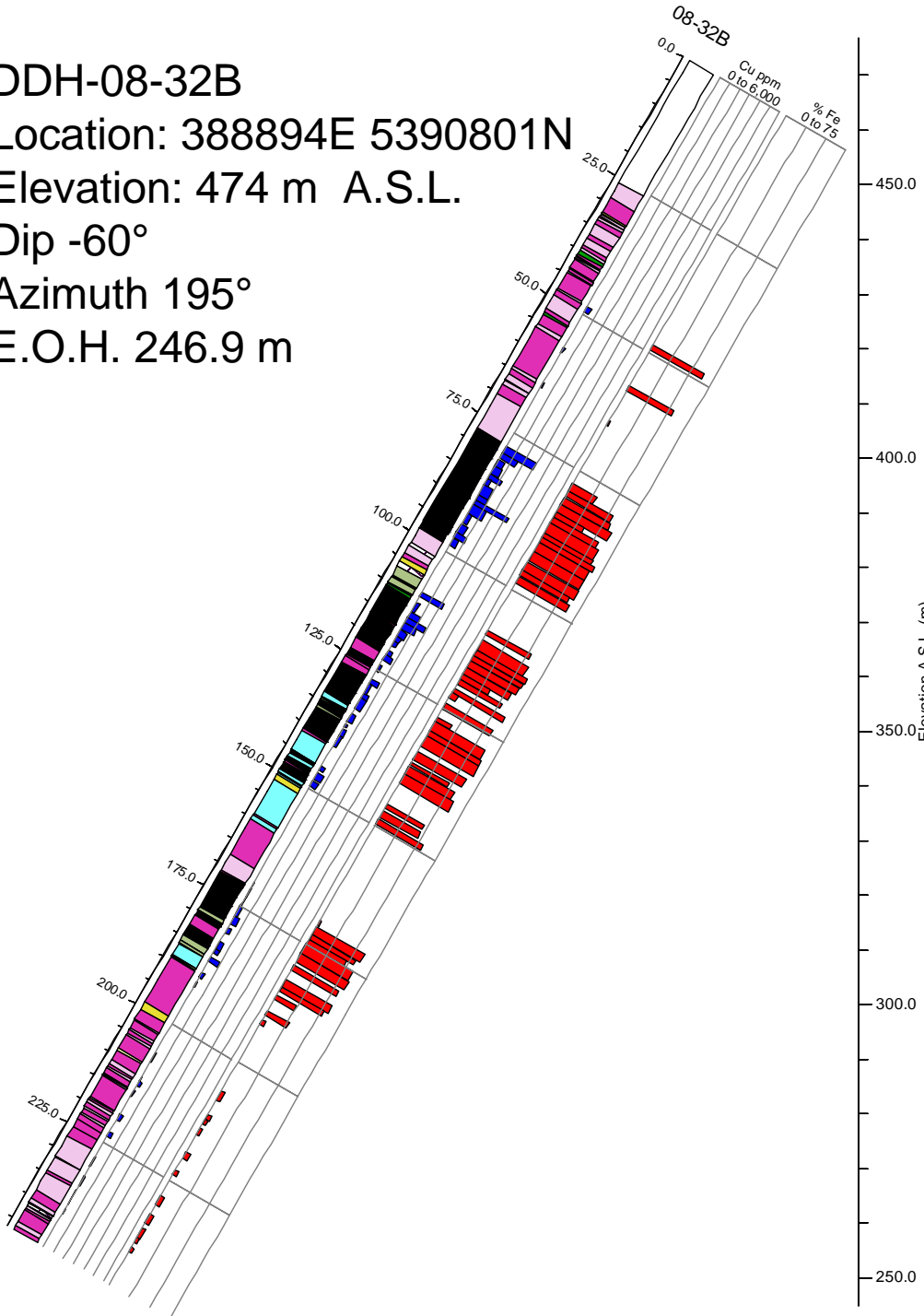
Location: 388894E 5390801N

Elevation: 474 m A.S.L.

Dip -60°

Azimuth 195°

E.O.H. 246.9 m



- Lithology**
- Biotite-Gabbro Porphyrite
 - Diorite
 - Gabbro
 - Obliterated-Propylitic
 - Obliteration-Silicic
 - Massive Magnetite
 - Hornblendite
 - Skarn
 - Marble

Intersections

From (m)	To (m)	Total Length (m)	Average Fe %	Average S%	Average Cu ppm
48.40	49.50	1.10	63.90	1.50	438.00
57.00	58.00	1.00	55.20	0.70	160.00
79.20	80.40	1.20	55.30	2.75	1535.00
80.65	94.00	13.35	59.34	2.87	986.85
94.20	97.10	2.90	61.81	2.77	743.41
97.20	98.70	1.50	63.30	2.54	589.00
108.60	109.60	1.00	53.70	3.02	2240.00
110.80	116.40	5.60	60.78	3.75	998.21
116.60	120.00	3.40	49.54	2.26	560.59
120.90	121.90	1.00	63.50	2.57	489.00
124.00	125.35	1.35	59.20	0.85	168.00
128.00	133.30	5.30	64.19	1.81	445.09
134.20	136.00	1.80	60.80	1.80	436.00
136.55	137.20	0.65	46.60	1.45	230.00
137.50	141.10	3.60	59.07	1.93	342.67
145.40	146.20	0.80	46.50	1.25	390.00
146.80	148.20	1.40	47.00	2.38	618.00
148.55	149.65	1.10	55.50	2.60	562.00
171.30	178.70	7.40	57.57	1.02	245.17
179.50	180.60	1.10	56.60	2.02	432.00
182.50	185.00	2.50	55.86	2.52	434.80

Cumulative Thickness 59.05 m @ 58.40% Fe @ 2.29% S @ 657.89 ppm Cu

Pad 17

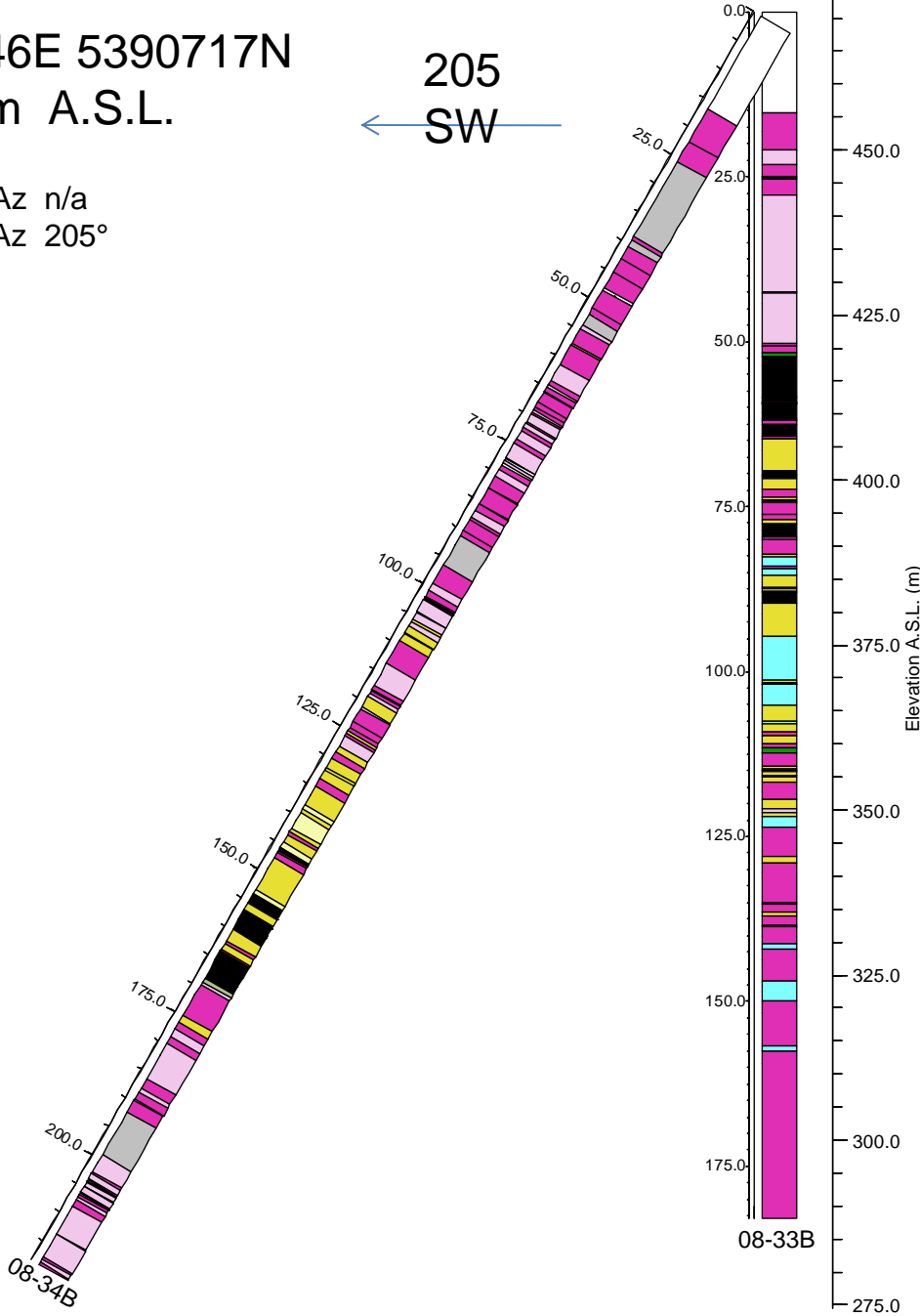
Location: 388946E 5390717N

Elevation: 471 m A.S.L.

DDH-08-33B Dip -90° Az n/a

DDH-08-34B Dip -60° Az 205°

205
← SW →



- Lithology
- Biotite-Gabbro Porphyrite
 - Diorite
 - Gabbro
 - Obliterated-Propylitic
 - Obliteration-Silicic
 - Massive Magnetite
 - Hornblendite
 - Skarn
 - Marble

DDH-08-33B

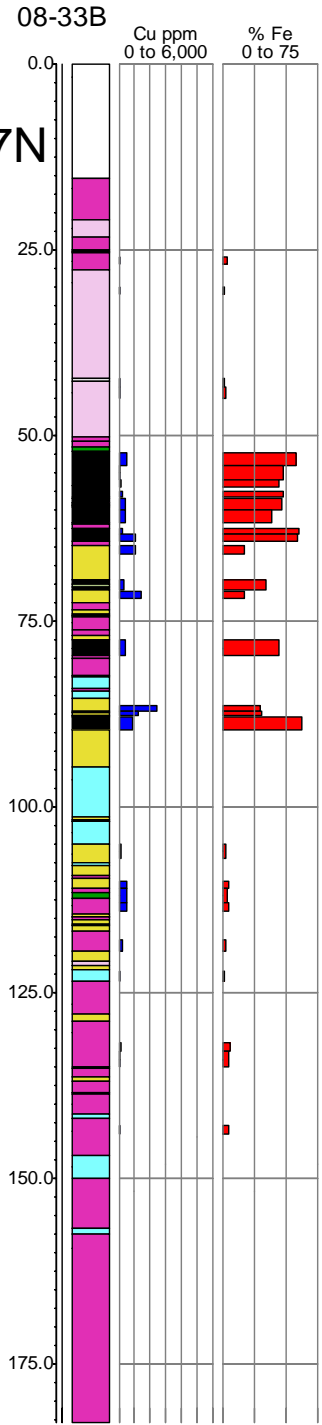
Location: 388946E 5390717N

Elevation: 471 m A.S.L.

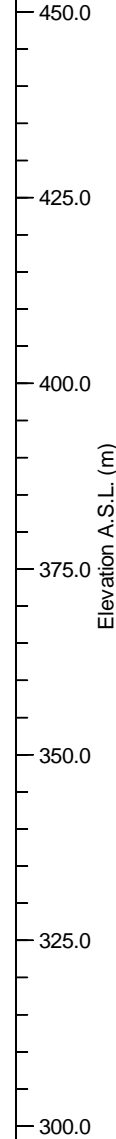
Dip -90°

Azimuth n/a°

E.O.H. 182.9 m



- Lithology**
- Biotite-Gabbro Porphyrite
 - Diorite
 - Gabbro
 - Obliterated-Propylitic
 - Obliteration-Silicic
 - Massive Magnetite
 - Hornblendite
 - Skarn
 - Marble



Intersections

From (m)	To (m)	Total Length (m)	Average Fe %	Average S %	Average Cu ppm
52.30	57.00	4.70	51.05	1.23	243.72
57.50	58.35	0.85	48.50	1.26	229.00
58.55	61.70	3.15	42.35	1.13	396.17
62.55	64.30	1.75	59.83	3.24	663.71
69.50	70.75	1.25	34.90	2.33	342.00
77.60	79.65	2.05	44.80	2.51	417.00
87.20	87.80	0.60	31.00	1.11	1205.00
87.95	89.65	1.70	63.30	1.71	825.00

Cumulative Thickness 16.05 m @ 48.66 % Fe @ 1.73 % S @ 445.95 ppm Cu

DDH-08-34B

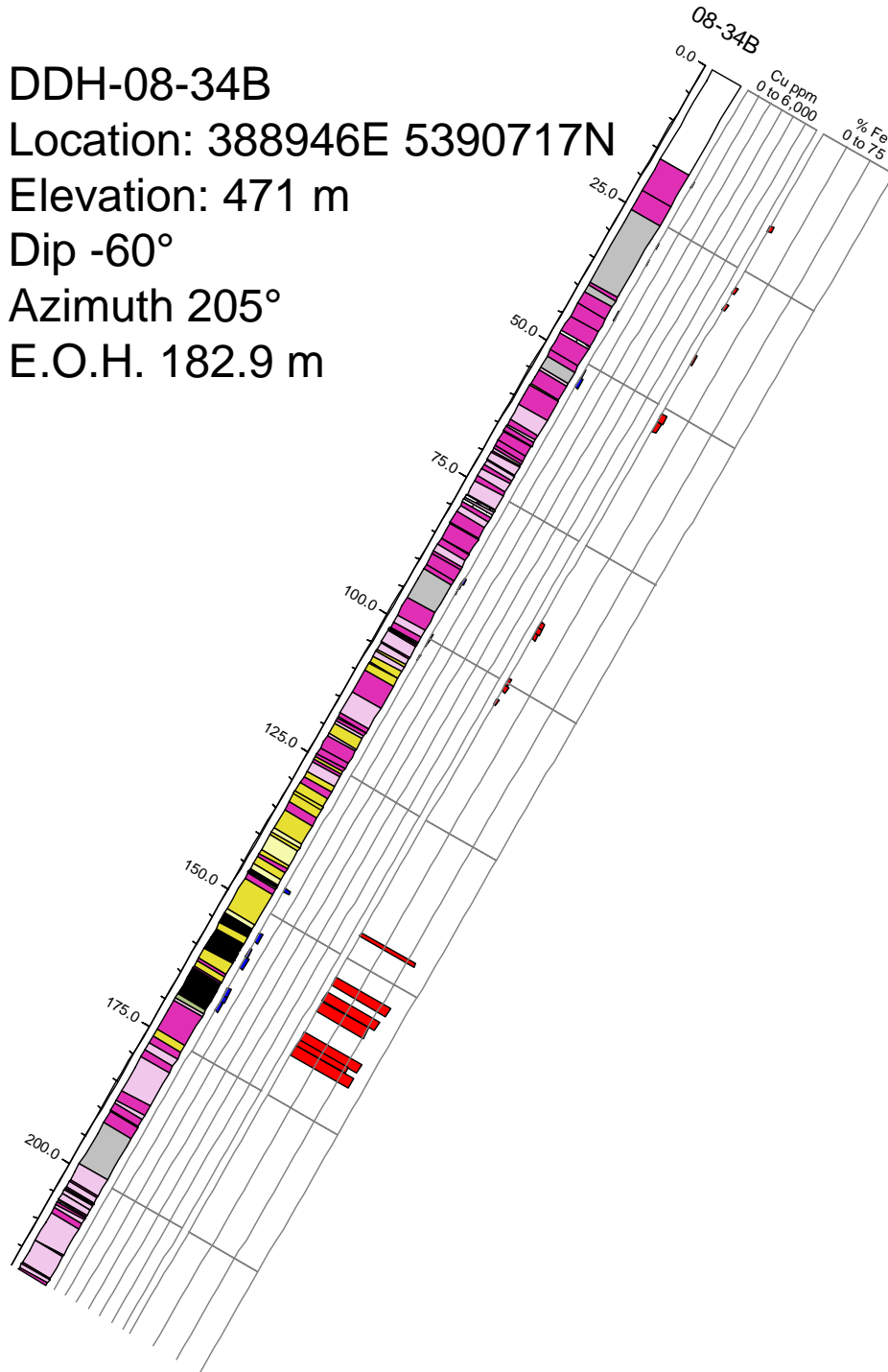
Location: 388946E 5390717N

Elevation: 471 m

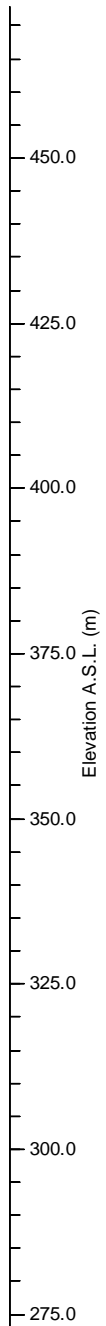
Dip -60°

Azimuth 205°

E.O.H. 182.9 m



- Lithology**
- Biotite-Gabbro Porphyrite
 - Diorite
 - Gabbro
 - Obliterated-Propylitic
 - Obliteration-Silicic
 - Massive Magnetite
 - Hornblendite
 - Skarn
 - Marble



Intersections

From (m)	To (m)	Total Length (m)	Average Fe %	Average S%	Average Cu ppm
145.50	146.10	0.60	58.30	2.43	488.00
153.60	155.15	1.55	59.00	1.41	319.00
156.40	157.90	1.50	56.10	1.02	131.50
158.00	159.90	1.90	50.30	0.74	305.00
163.55	167.70	4.15	59.51	1.34	310.94

Cumulative Thickness 9.70 m @ 57.02% Fe @ 1.25% S @ 294.27 ppm Cu

Pad 18

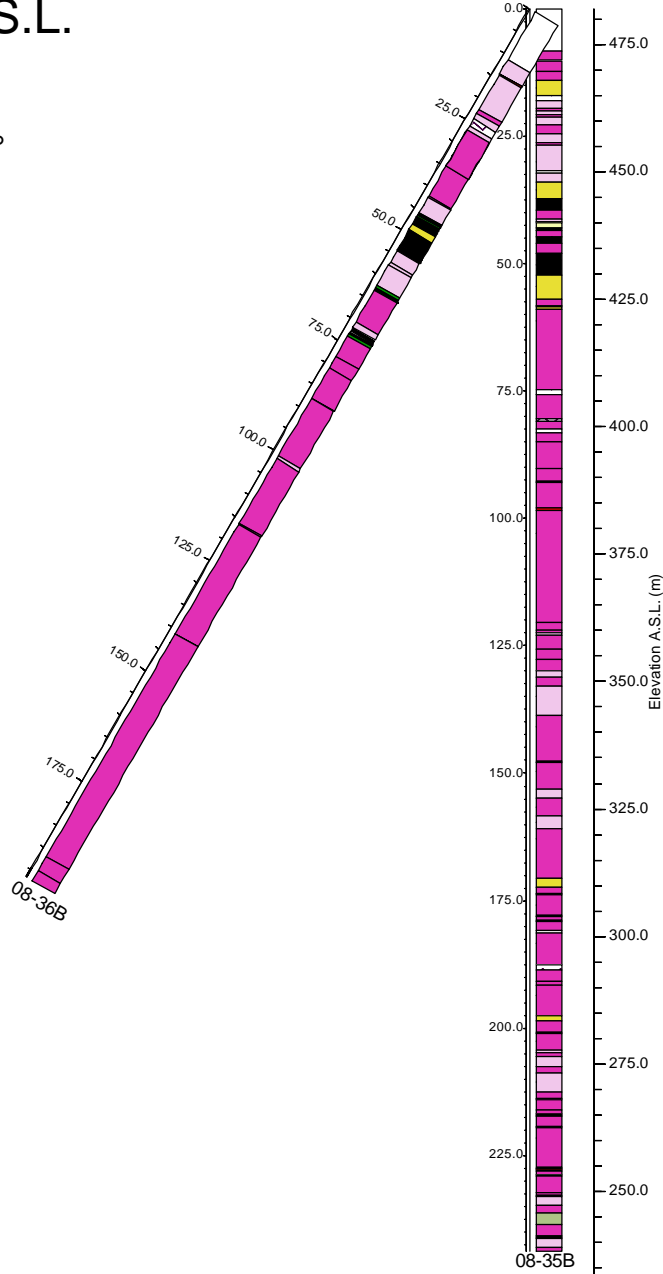
Location: 389038E 5390631N

Elevation: 482 m A.S.L.

DDH-08-35B Dip -90° Az n/a

DDH-08-36B Dip -60° Az 336°

336
NW



- Lithology
- Biotite-Gabbro Porphyrite
 - Diorite
 - Gabbro
 - Obliterated-Propylitic
 - Obliteration-Silicic
 - Massive Magnetite
 - Hornblendite
 - Skarn
 - Marble

DDH-08-35B

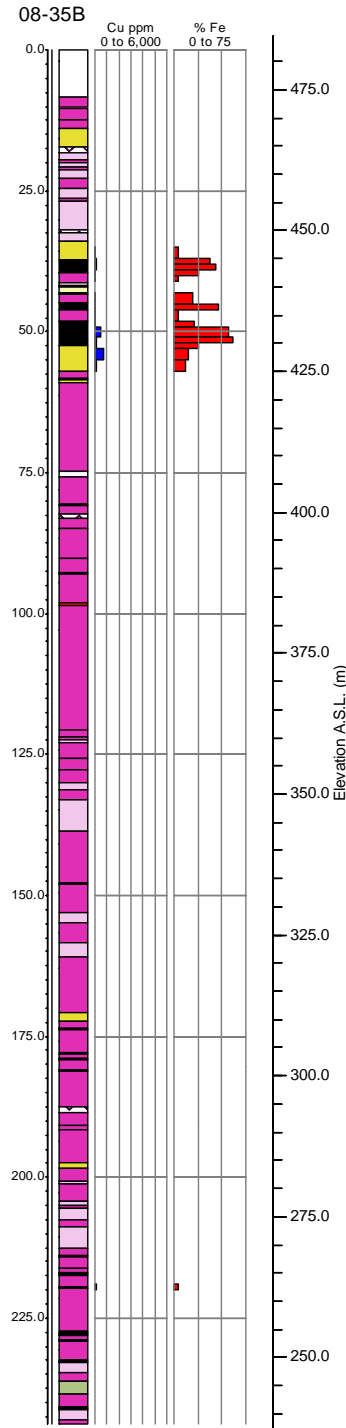
Location: 389038E 5390631N

Elevation: 482 m

Dip -90°

Azimuth n/a

E.O.H. 243.8 m



- Lithology**
- Biotite-Gabbro Porphyrite
 - Diorite
 - Gabbro
 - Obliterated-Propylitic
 - Obliteration-Silicic
 - Massive Magnetite
 - Hornblendite
 - Skarn
 - Marble

Intersections

From (m)	To (m)	Total Length (m)	Average Fe %	Average S%	Average Cu ppm
37.00	39.00	2.00	40.55	1.27	86.15
45.00	46.00	1.00	46.10	0.40	23.00
49.00	52.00	3.00	58.37	2.09	356.27

Cumulative Thickness

6.00 m @ 50.38% Fe
@ 1.54% S
@ 210.68 ppm Cu

DDH-08-36B

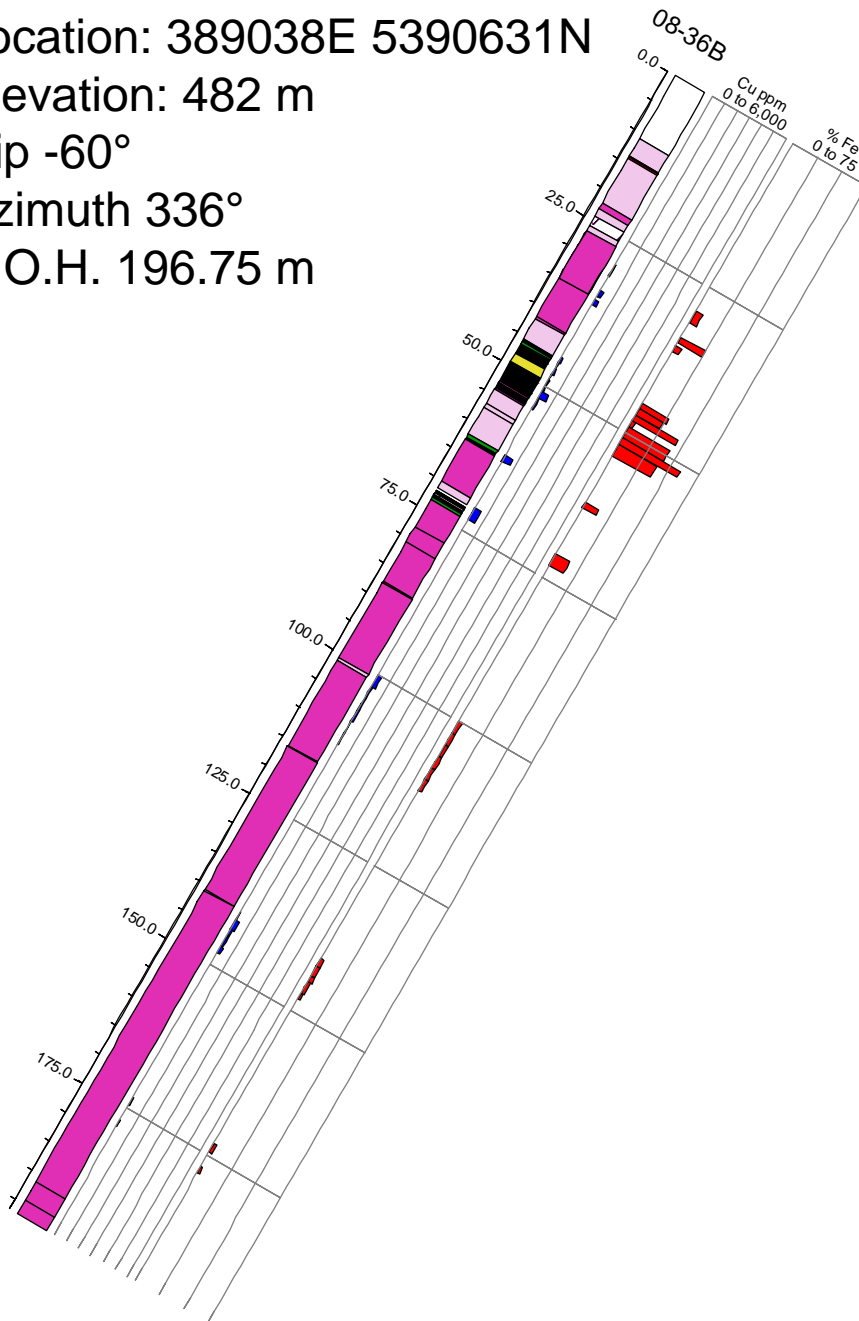
Location: 389038E 5390631N

Elevation: 482 m

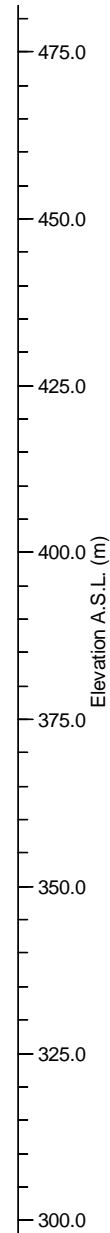
Dip -60°

Azimuth 336°

E.O.H. 196.75 m



- Lithology**
- Biotite-Gabbro Porphyrite
 - Diorite
 - Gabbro
 - Obliterated-Propylitic
 - Obliteration-Silicic
 - Massive Magnetite
 - Hornblendite
 - Skarn
 - Marble



Intersections

From (m)	To (m)	Total Length (m)	Average Fe %	Average S %	Average Cu ppm
47.00	48.00	1.00	43.90	1.04	135.50
49.00	54.00	5.00	44.38	1.09	204.60

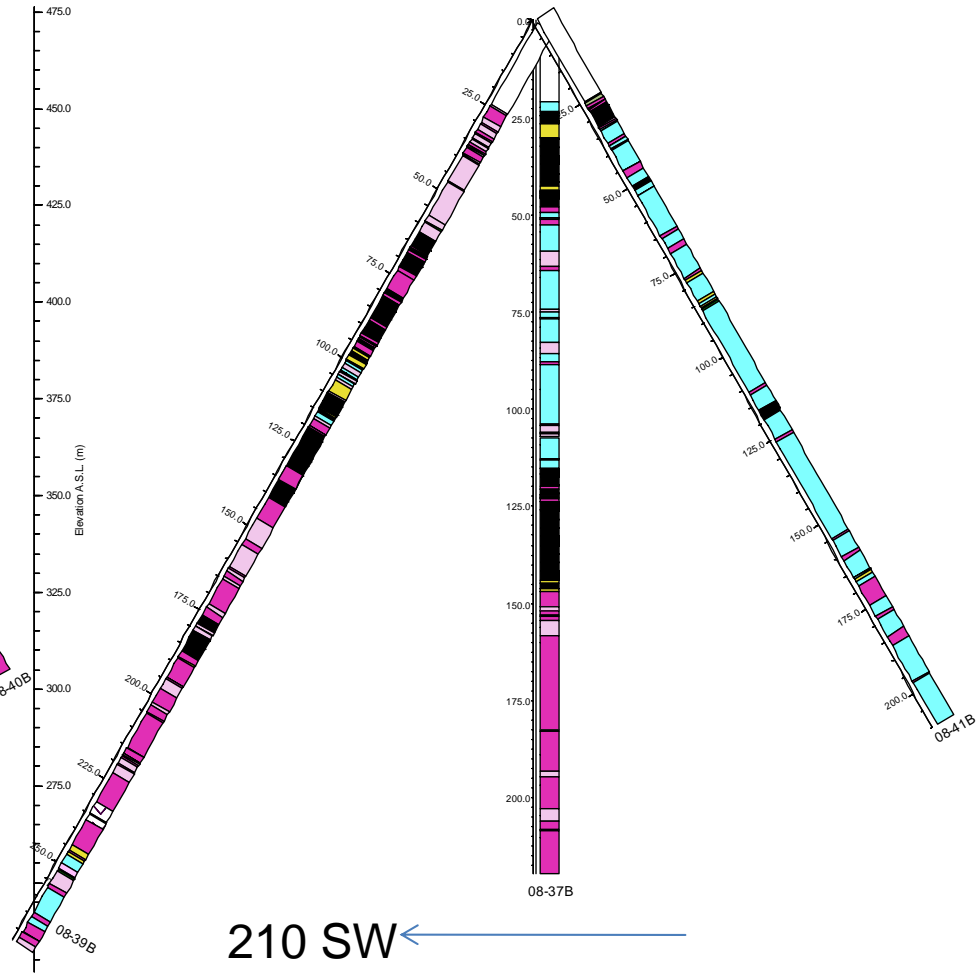
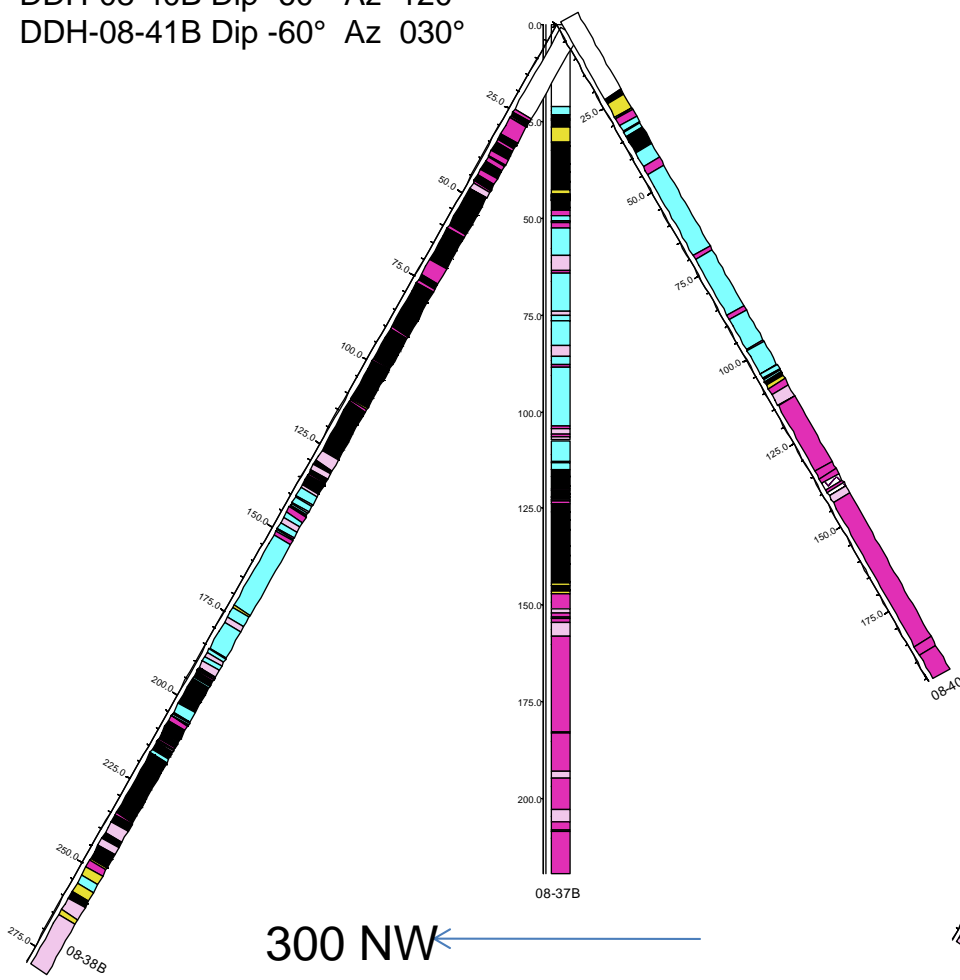
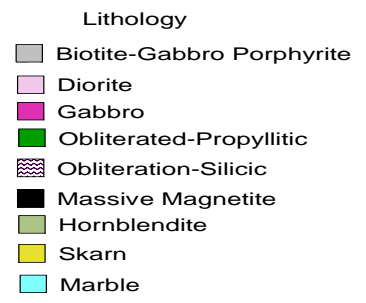
Cumulative Thickness 6.00m @ 44.30% Fe @ 1.09% S @ 193.08 ppm Cu

Pad 19

Location: 388951E 5390773N

Elevation: 472 m A.S.L.

- DDH-08-37B Dip -90° Az n/a
- DDH-08-38B Dip -60° Az 300°
- DDH-08-39B Dip -60° Az 210°
- DDH-08-40B Dip -60° Az 120°
- DDH-08-41B Dip -60° Az 030°



DDH-08-37B

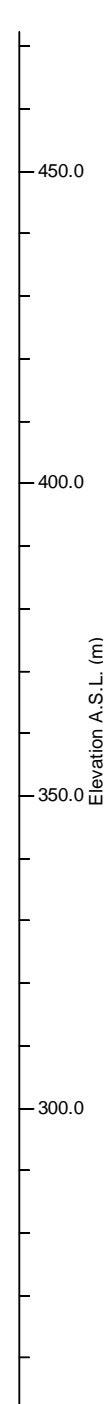
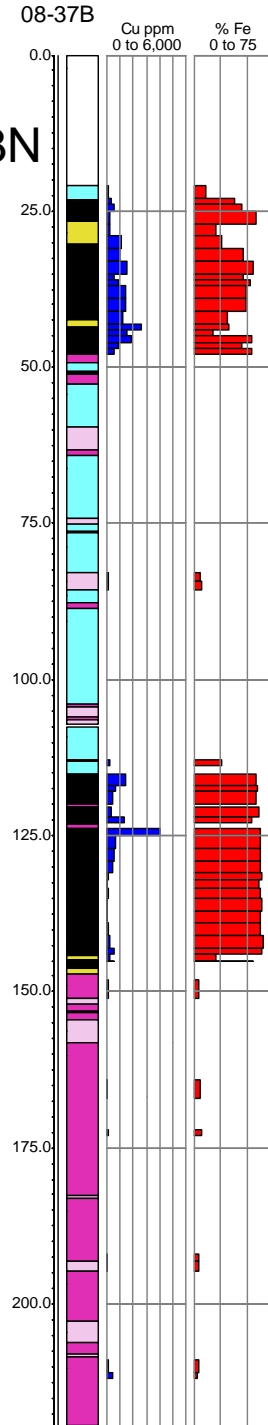
Location: 388951E 5390773N

Elevation: 472 m

Dip -90°

Azimuth n/a

E.O.H. 219.5m



- Lithology**
- Biotite-Gabbro Porphyrite
 - Diorite
 - Gabbro
 - Obliterated-Propylitic
 - Obliteration-Silicic
 - Massive Magnetite
 - Hornblendite
 - Skarn
 - Marble

Intersections					
From (m)	To (m)	Total Length (m)	Average Fe %	Average S%	Average Cu ppm
23.00	27.00	4.00	50.08	0.85	330.25
31.00	44.00	13.00	46.14	2.76	1313.77
45.00	48.00	3.00	51.80	2.54	1082.00
115.10	119.85	4.75	59.03	1.68	881.17
120.40	123.00	2.60	58.85	0.43	696.94
123.80	133.35	9.55	62.46	0.25	880.67
133.55	144.00	10.45	63.88	0.36	122.21
145.00	145.20	0.20	56.60	0.37	519.00
Cumulative Thickness		47.55 m	@	56.03% Fe	
			@	1.31% S	
			@	787.27 ppm Cu	

DDH-08-40B

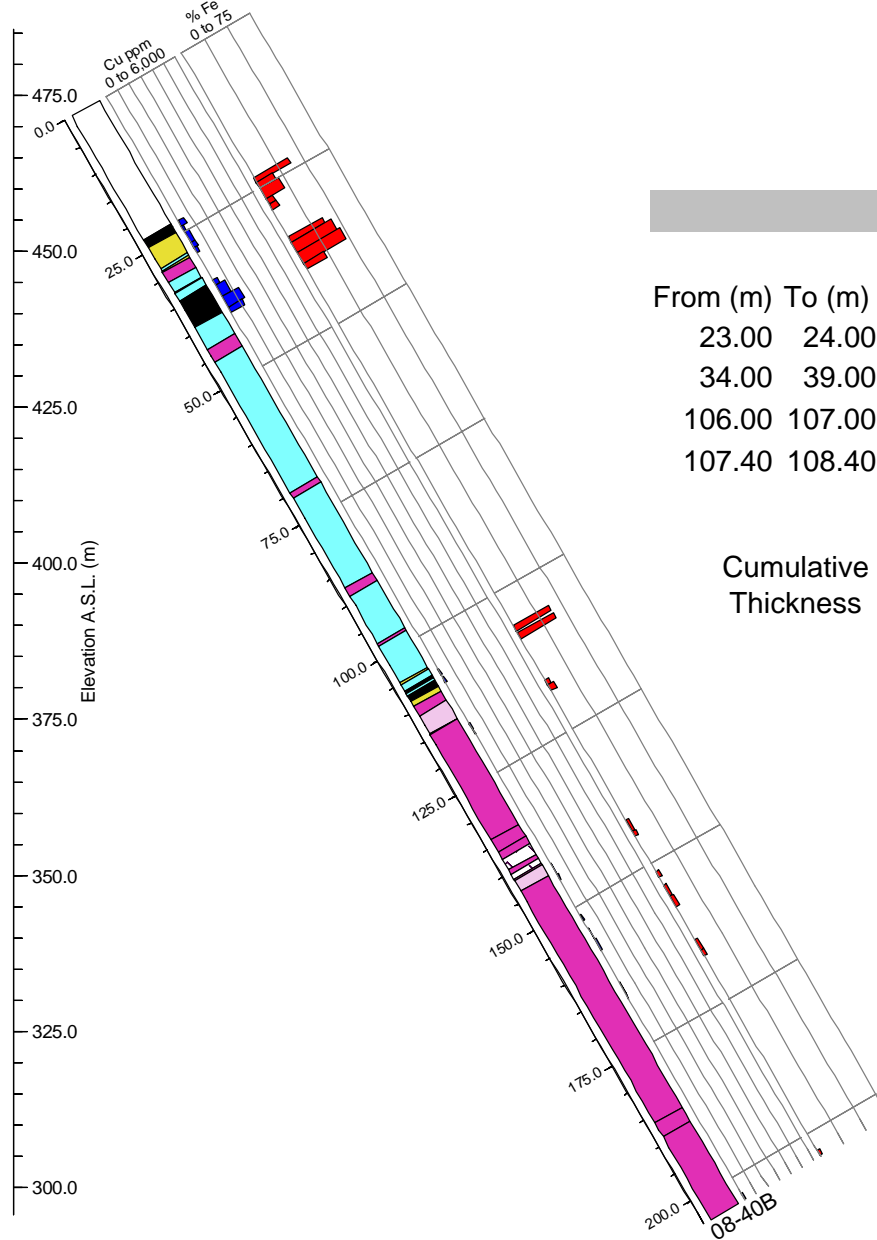
Location: 388951E 5390773N

Elevation: 472 m

Dip -60°

Azimuth 120°

E.O.H. 204.2m



- Lithology**
- Biotite-Gabbro Porphyrite
 - Diorite
 - Gabbro
 - Obliterated-Propylitic
 - Obliteration-Silicic
 - Massive Magnetite
 - Hornblendite
 - Skarn
 - Marble

Intersections

From (m)	To (m)	Total Length (m)	Average Fe %	Average S%	Average Cu ppm
23.00	24.00	1.00	44.92	2.37	598.60
34.00	39.00	5.00	43.38	3.85	960.20
106.00	107.00	1.00	38.60	0.70	108.00
107.40	108.40	1.00	38.80	1.19	136.50

Cumulative Thickness

8.00 m @
@
@
41.48% Fe
2.94% S
705.51 ppm Cu

DDH-08-41B

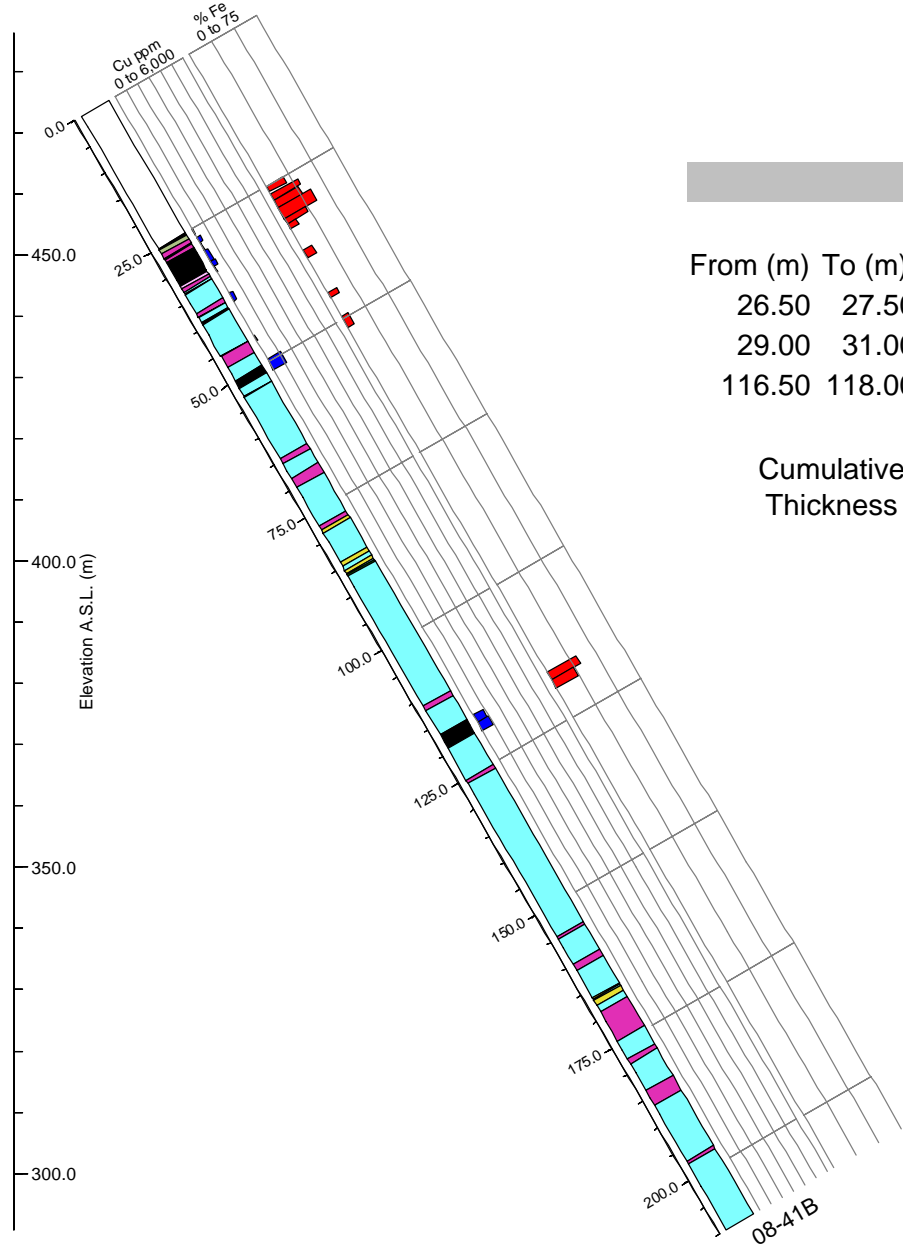
Location: 388951E 5390773N

Elevation: 472 m

Dip -60°

Azimuth 030°

E.O.H. 210.0m



- Lithology**
- Biotite-Gabbro Porphyrite
 - Diorite
 - Gabbro
 - Obliterated-Propylitic
 - Obliteration-Silicic
 - Massive Magnetite
 - Hornblendite
 - Skarn
 - Marble

Intersections					
From (m)	To (m)	Total Length (m)	Average Fe %	Average S%	Average Cu ppm
26.50	27.50	1.00	30.10	1.09	295.00
29.00	31.00	2.00	36.40	2.39	266.00
116.50	118.00	1.50	32.20	4.29	854.00
Cumulative Thickness			4.50 m	@	33.60 % Fe
				@	2.73 % S
				@	468.44 ppm Cu

